

STYLE. QUALITY. FUNCTION.

**ARPANEL**

# Technical details





Horizontal facade system 4

---

Vertical facade system 19

---

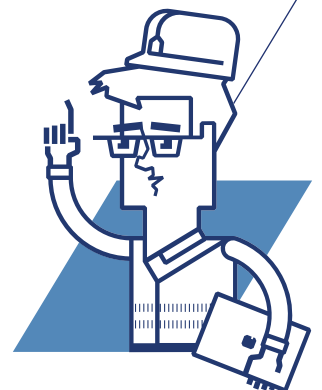
Roof cladding system 31

---

Cladding system for cold store objects 46

**Additional information:**

These technical details are demonstrative material only and do not constitute the only design solution. Designer appoints quantity and type of screws on the basis of loads, with consideration to type and thickness of a structure, as well as a compartment function.



# Horizontal facade system

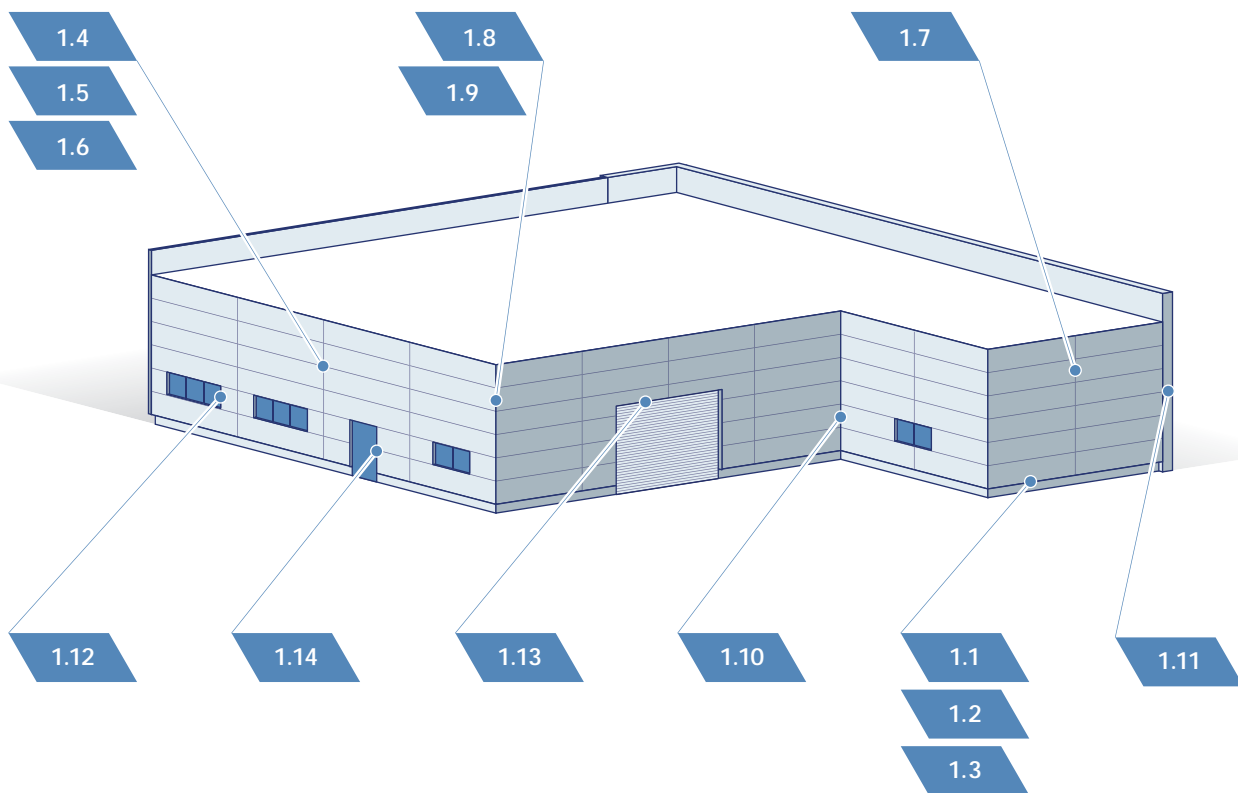
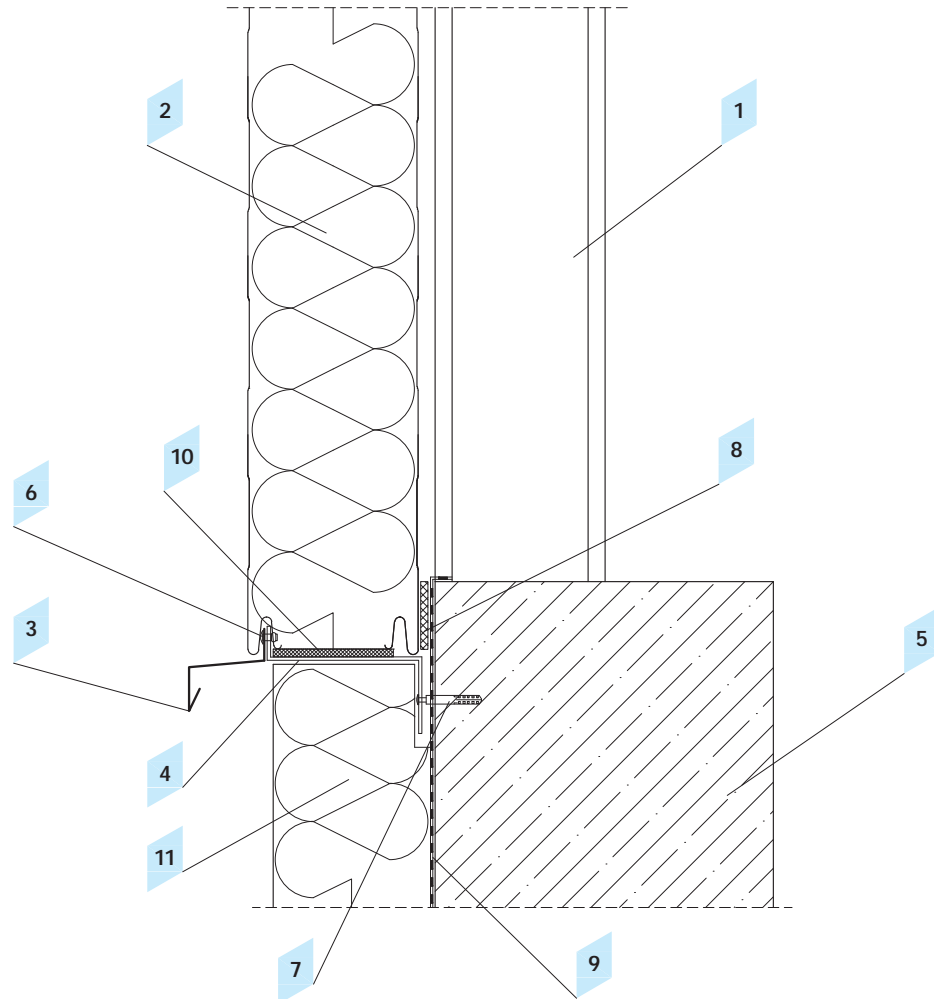


Diagram of placement of exemplary technical details

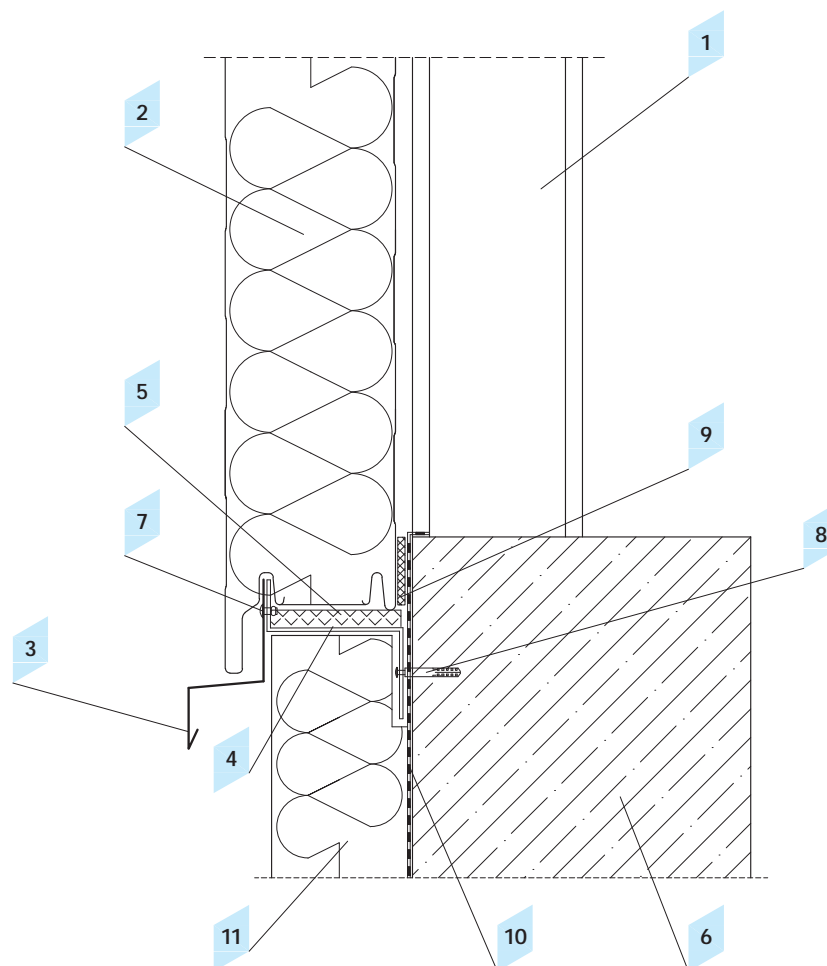
**Object**

- 1.1 Starting detail - withdrawn plinth, version I
- 1.2 Starting detail - withdrawn plinth, version II
- 1.3 Starting detail - extended plinth
- 1.4 Detail of fastening a panel to a steel construction
- 1.5 Detail of fastening a panel to a steel construction - Omega profile
- 1.6 Panel to panel junction – steel construction
- 1.7 Panel to panel junction - reinforced concrete structure
- 1.8 External corner detail
- 1.9 Panel corner element detail
- 1.10 Internal corner detail
- 1.11 Panel connection to brick wall detail
- 1.12 Window detail
- 1.13 Gate detail
- 1.14 Doors detail



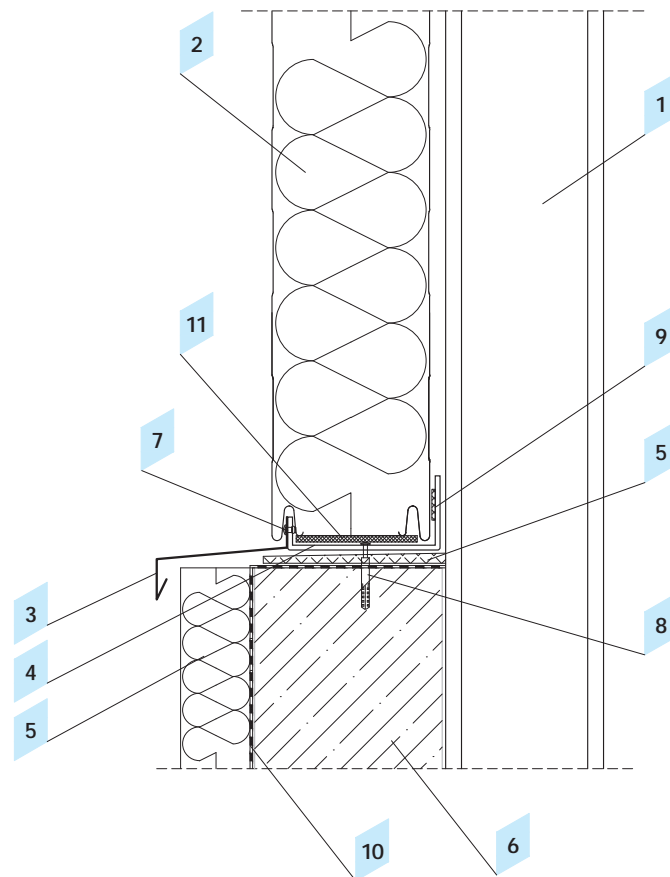
## 1.1 Starting detail - withdrawn plinth, version I

Object	Product code
1 Construction element	
2 Wall panel ARPANEL S	ARPANEL S
3 Eaves flashing	OBPZ-1
4 Fixing profile	LS-1
5 Substructure	
6 Steel tight rivet (every 300mm)	NT
7 Fastening element	
8 Acoustic and insulating gasket PES	US-04
9 Anti-moisture insulation acc. to the architectonic design	
10 Expanding gasket PURS	US-05
11 Thermal insulation of substructure	



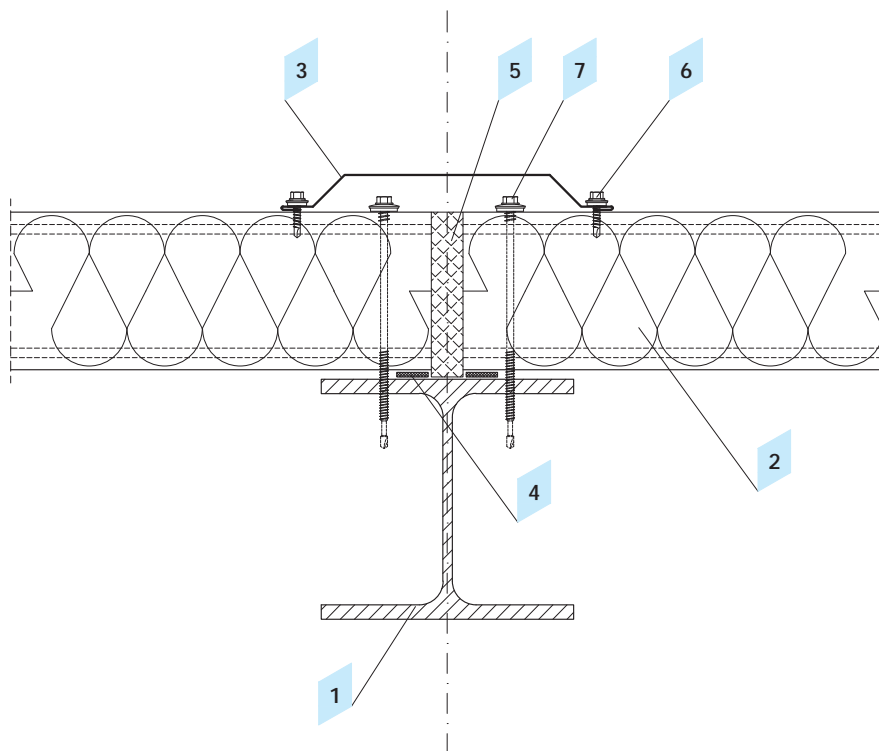
**1.2 Starting detail - withdrawn plinth, version II**

Object	Product code
1 Construction element	
2 Wall panel ARPANEL SU	ARPANEL SU
3 Eaves flashing	OBPZ-2
4 Fixing profile	LS-2
5 Thermal insulation	
6 Substructure	
7 Steel tight rivet (every 300mm)	NT
8 Fastening element	
9 Acoustic and insulating gasket PES	US-04
10 Expanding gasket PURS	US-05
11 Thermal insulation of substructure	



### 1.3 Starting detail - extended plinth

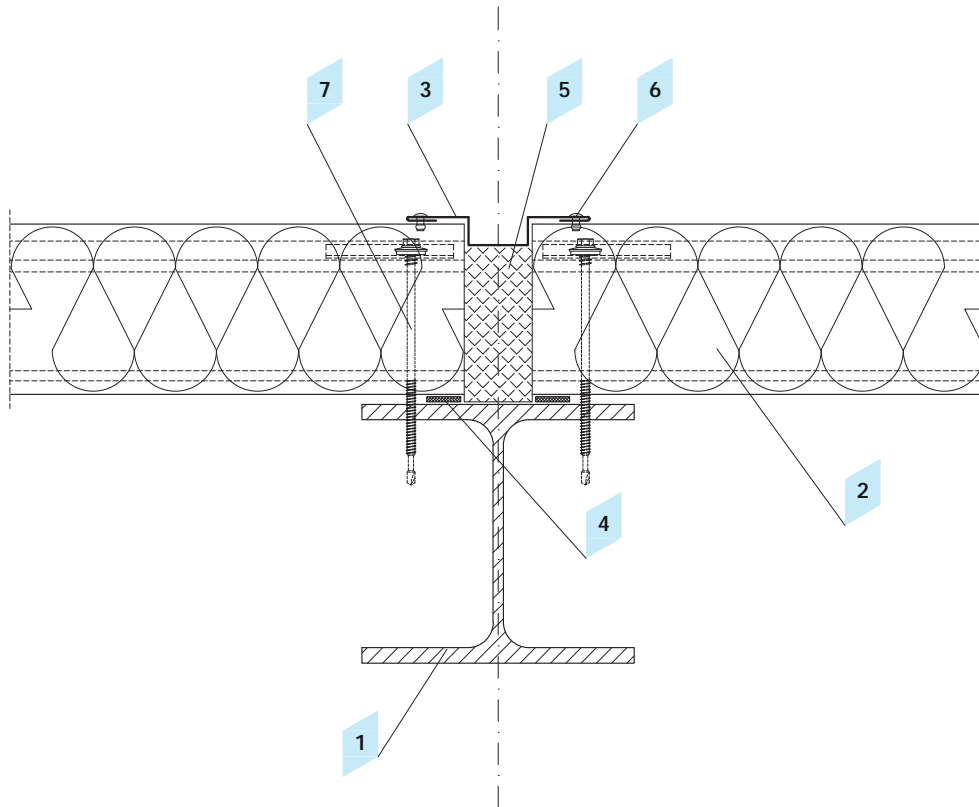
Object	Product code
1 Construction element	
2 Wall panel ARPANEL S	ARPANEL S
3 Eaves flashing	OBPZ-3
4 Fixing profile	LS-3
5 Thermal insulation	
6 Substructure	
7 Steel tight rivet (every 300mm)	NT
8 Fastening element, at least every 80cm	
9 Acoustic and insulating gasket PES	US-04
10 Anti-moisture insulation acc. to the architectonic design	
11 Expanding gasket PURS	US-05



**1.4 Detail of fastening a panel to a steel construction**

Object	Product code
1 Construction element	
2 Wall panel ARPANEL S	ARPANEL S
3 Mask flashing	OBPZ-6
4 Acoustic and insulating gasket PES	US-04
5 Thermal insulation	
6 Fastening screw	Z-03
7 Self-drilling screw	Z-01

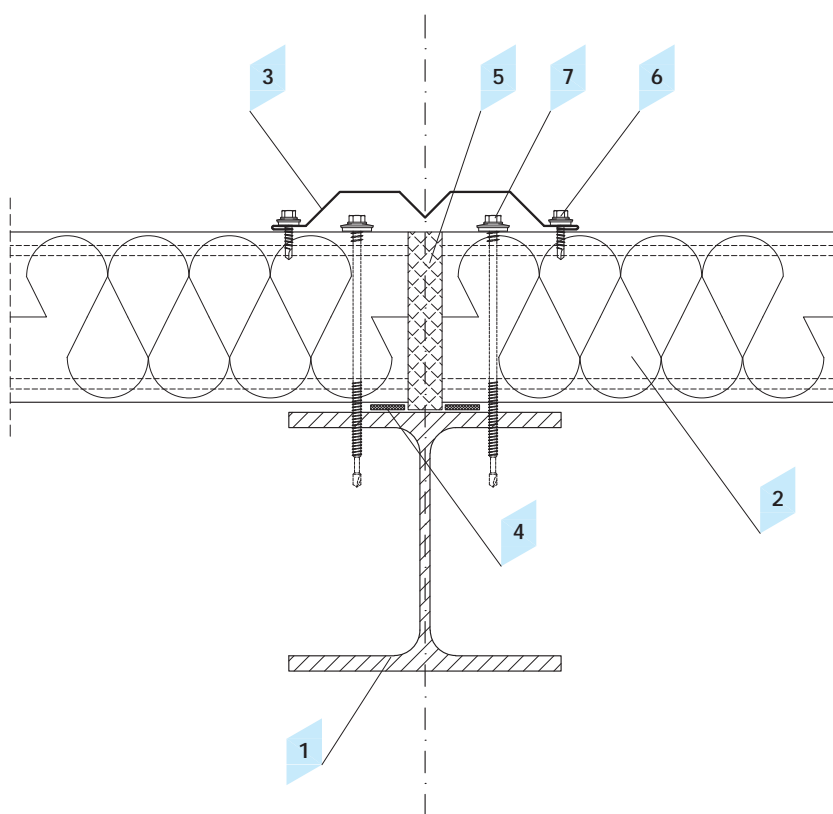




The designer determines the number and type of fasteners on the basis of loads, taking into account the type and thickness of the structure and the function of the partition.

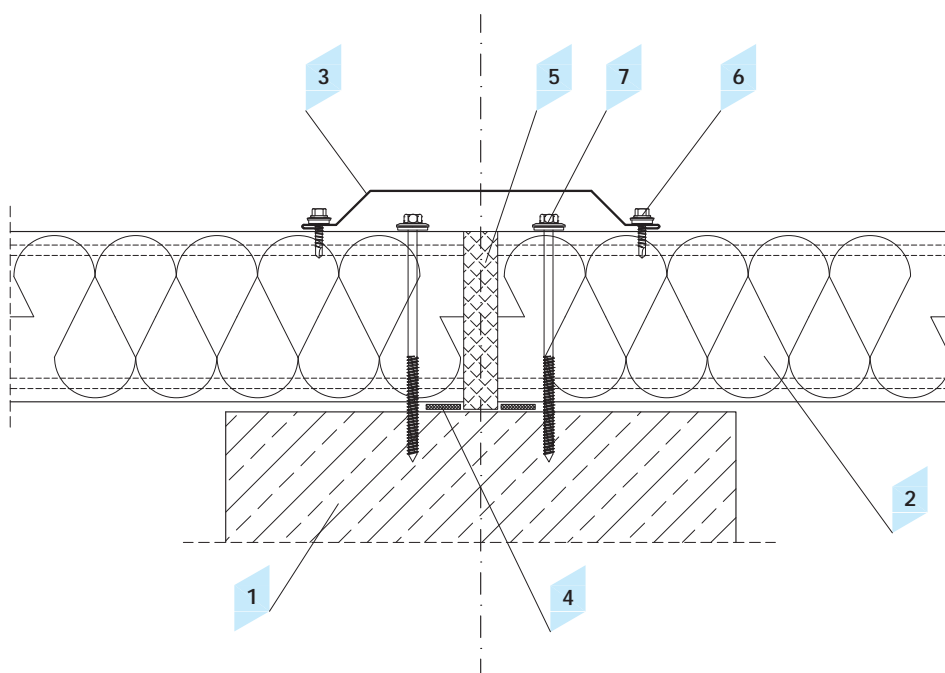
## 1.5 Detail of fastening a panel to a steel construction - Omega profile

Object	Product code
1 Construction element	
2 Wall panel ARPANEL SU	ARPANEL SU
3 Mask flashing	OBPZ-7
4 Acoustic and insulating gasket PES	US-04
5 Thermal insulation	
6 Steel tight rivet (every 300mm)	NT
7 Self-drilling screw	Z-01



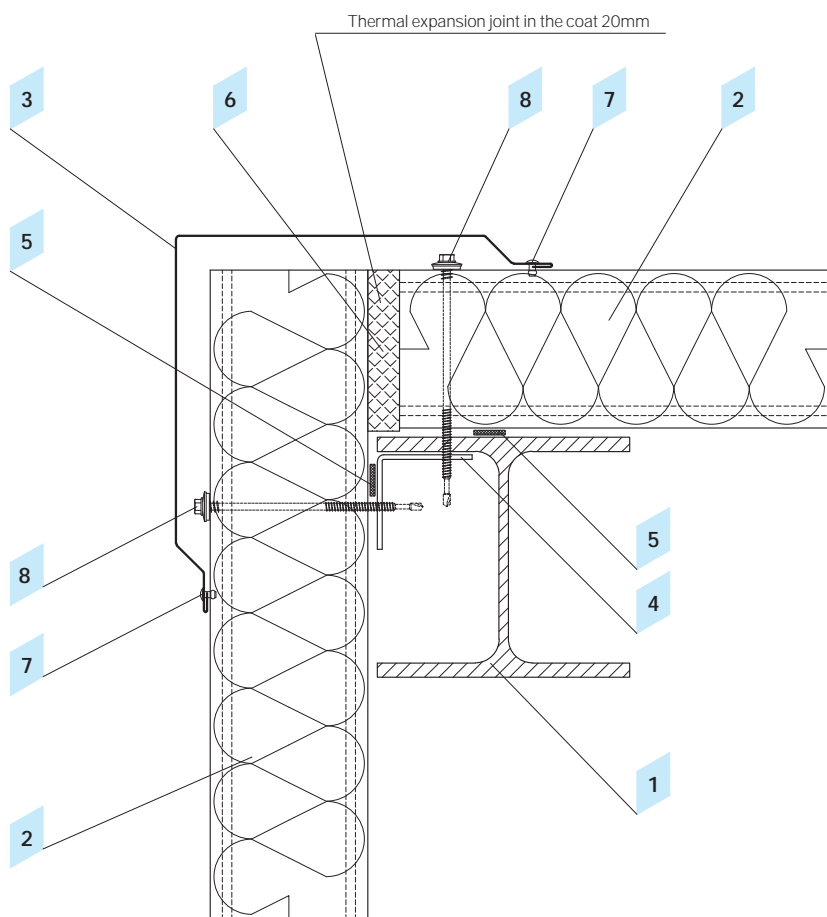
**1.6 Panel to panel junction – steel construction**

Object	Product code
1 Construction element	
2 Wall panel ARPANEL S	ARPANEL S
3 Mask flashing	OBPZ-8
4 Acoustic and insulating gasket PES	US-04
5 Thermal insulation	
6 Fastening screw	Z-03
7 Self-drilling screw	Z-01



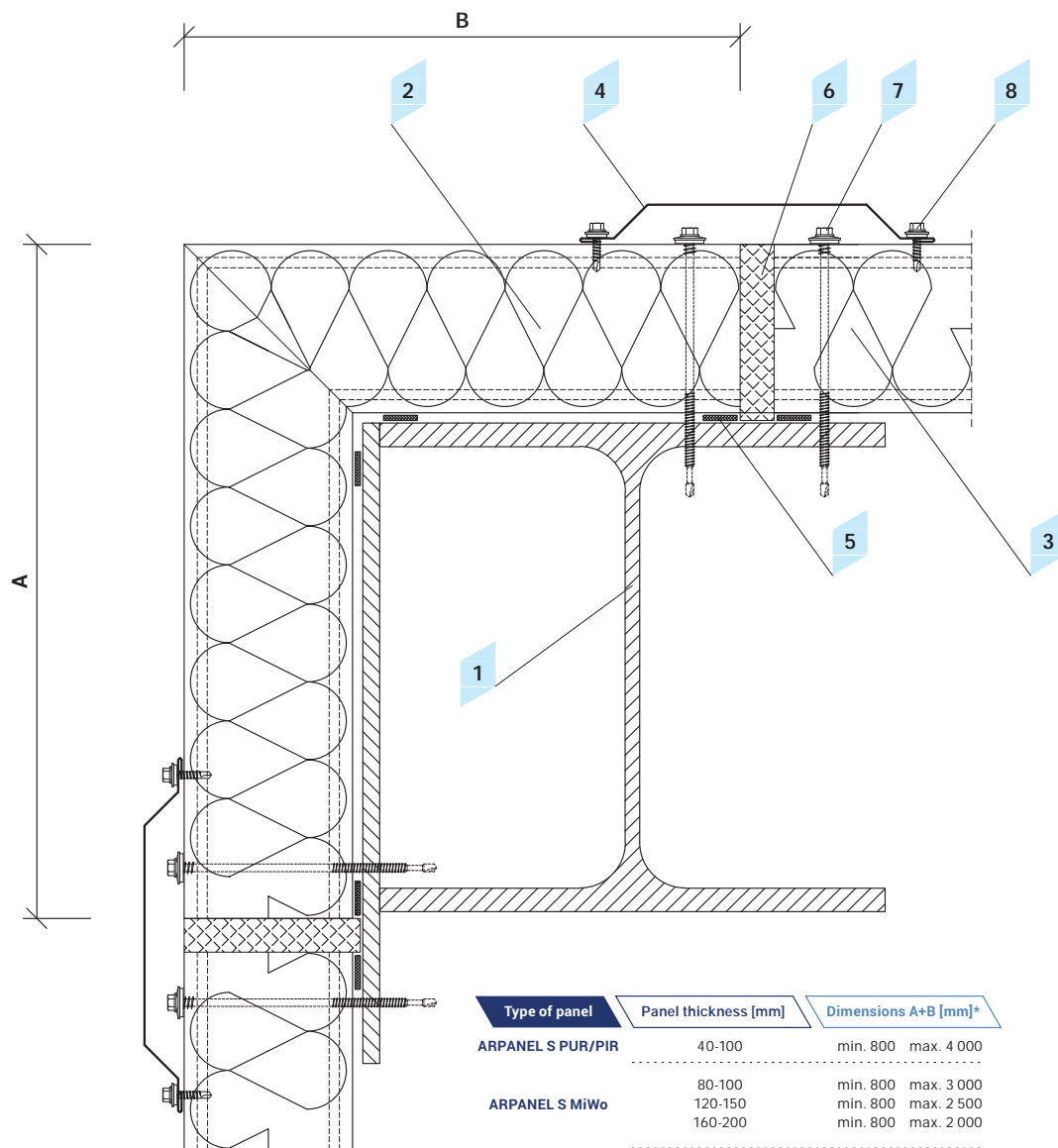
## 1.7 Panel to panel junction – reinforced concrete structure

Object	Product code
1 Reinforced element	
2 Wall panel ARPANEL S	ARPANEL S
3 Mask flashing	OBPZ-6
4 Acoustic and insulating gasket PES	US-04
5 Thermal insulation	
6 Fastening screw	Z-03
7 Screw to fasten sandwich panels to the reinforced concrete structure (zinc coated)	Z-05



**1.8 External corner detail**

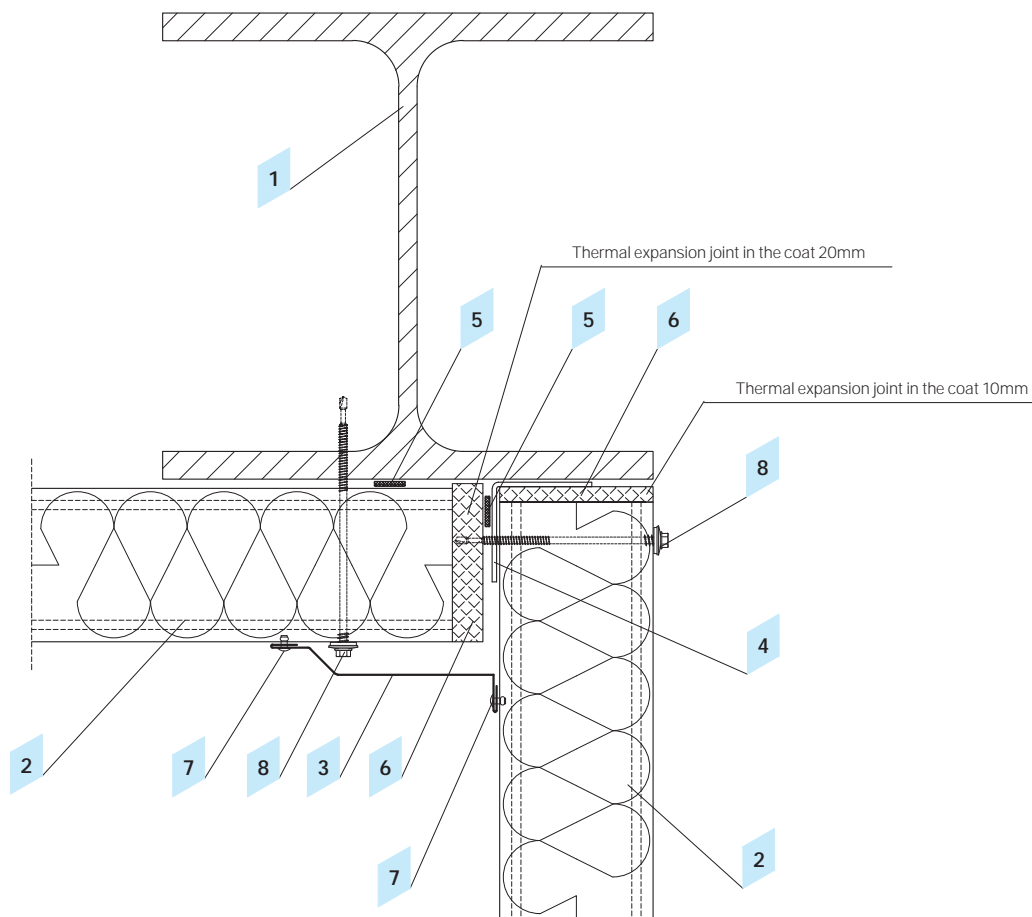
Object	Product code
1 Construction element	
2 Wall panel ARPANEL S	ARPANEL S
3 Corner flashing	OBPI-13
4 Angle bar	
5 Acoustic and insulating gasket PES	US-04
6 Thermal insulation	
7 Steel tight rivet (every 300mm)	NT
8 Self-drilling screw	Z-01



\* Dimensions A or B: min. 400

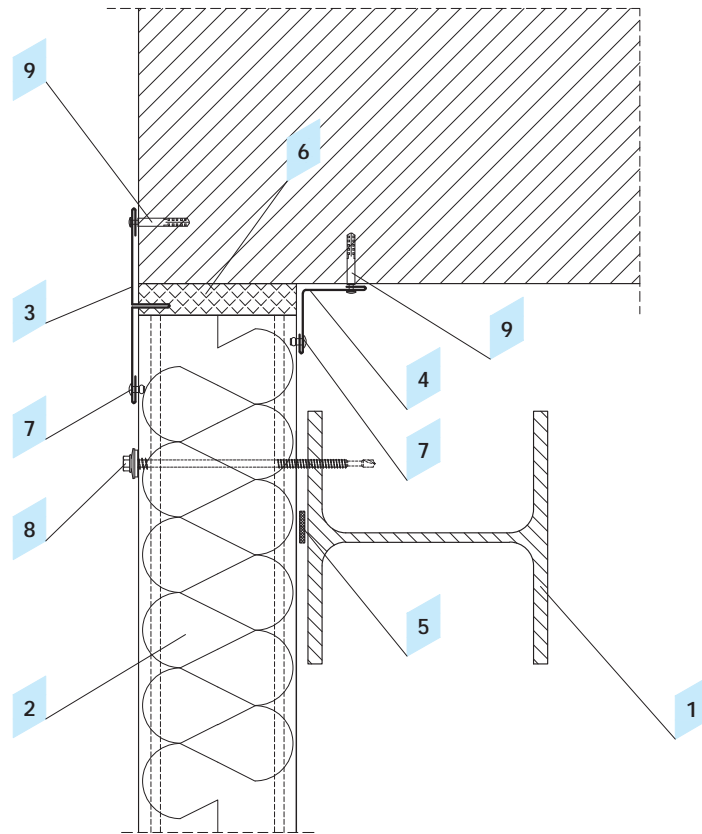
## 1.9 Panel corner element detail

Object	Product code
1 Pole - construction element	
2 ARPANEL corner element	
3 Wall panel ARPANEL S	ARPANEL S
4 Mask flashing	OBPZ-6
5 Acoustic and insulating gasket PES	US-04
6 Thermal insulation	
7 Self-drilling screw	Z-01
8 Fastening screw	Z-03



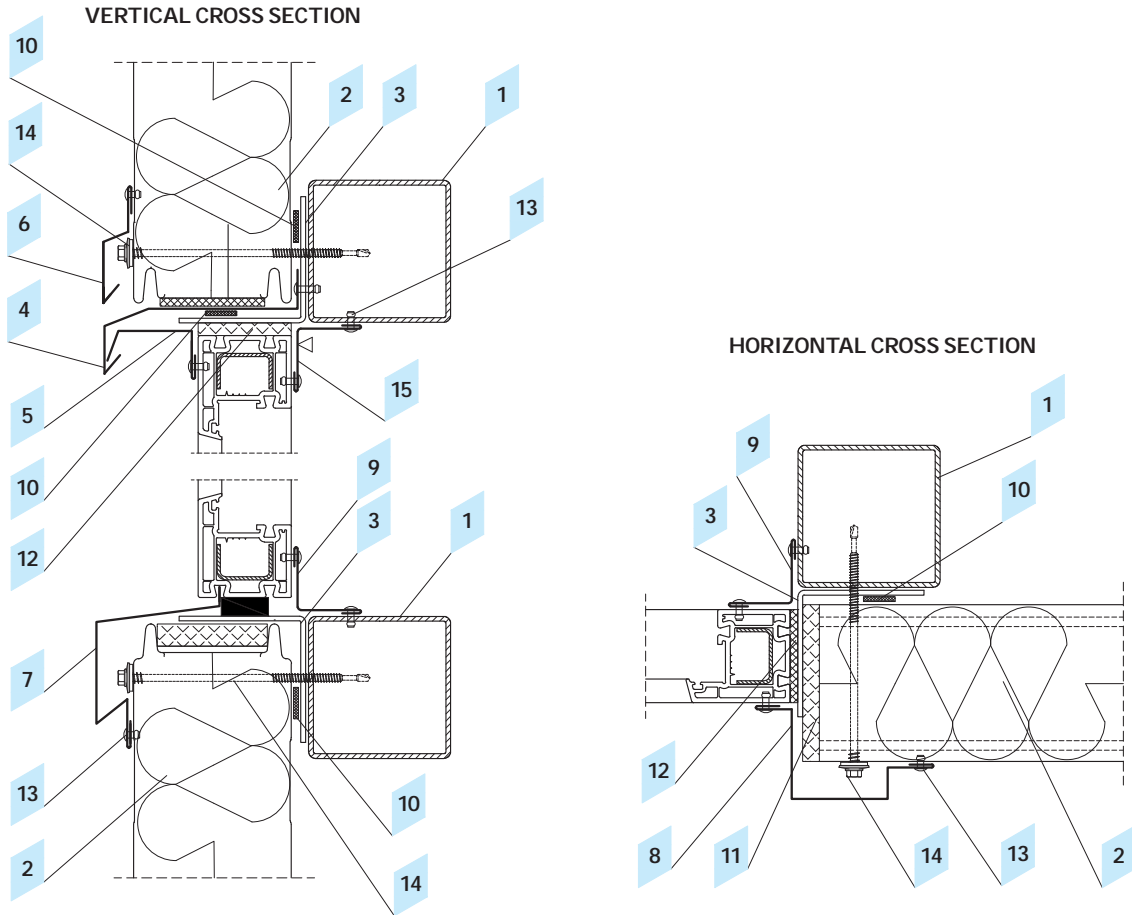
**1.10 Internal corner detail**

Object	Product code
1 Construction element	
2 Wall panel ARPANEL S	ARPANEL S
3 Internal mask flashing	OBPZ-10
4 Angle bar	
5 Acoustic and insulating gasket PES	US-04
6 Thermal insulation	
7 Steel tight rivet (every 300mm)	NT
8 Self-drilling screw	Z-01



## 1.11 Panel connection to brick wall detail

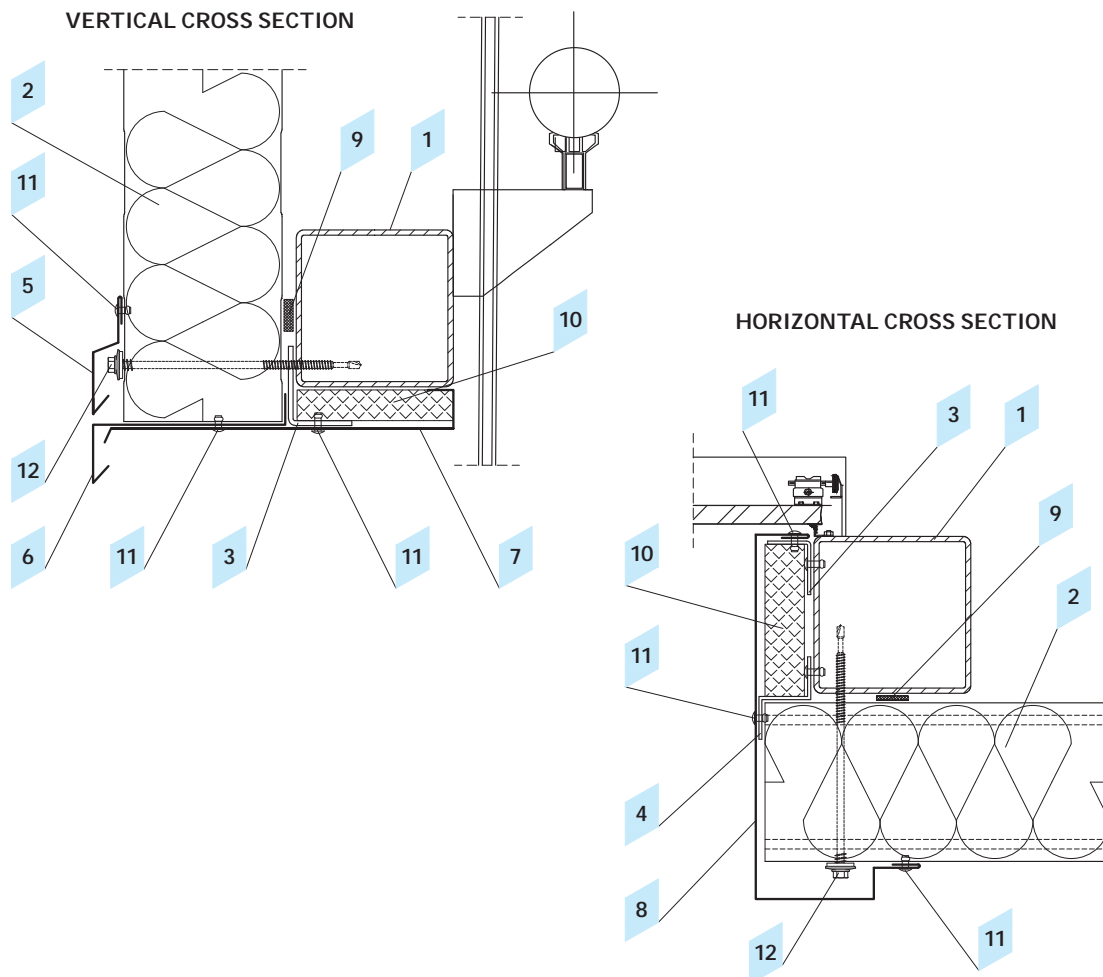
Object	Product code
1 Construction element	
2 Wall panel ARPANEL S	ARPANEL S
3 Mask gap flashing	OBPZ-9
4 Corner internal flashing	OBPI-15
5 Acoustic and insulating gasket PES	US-04
6 Thermal insulation	
7 Steel tight rivet (every 300mm)	NT
8 Self-drilling screw	Z-01
9 Expansion fastener	



### 1.12 Window detail

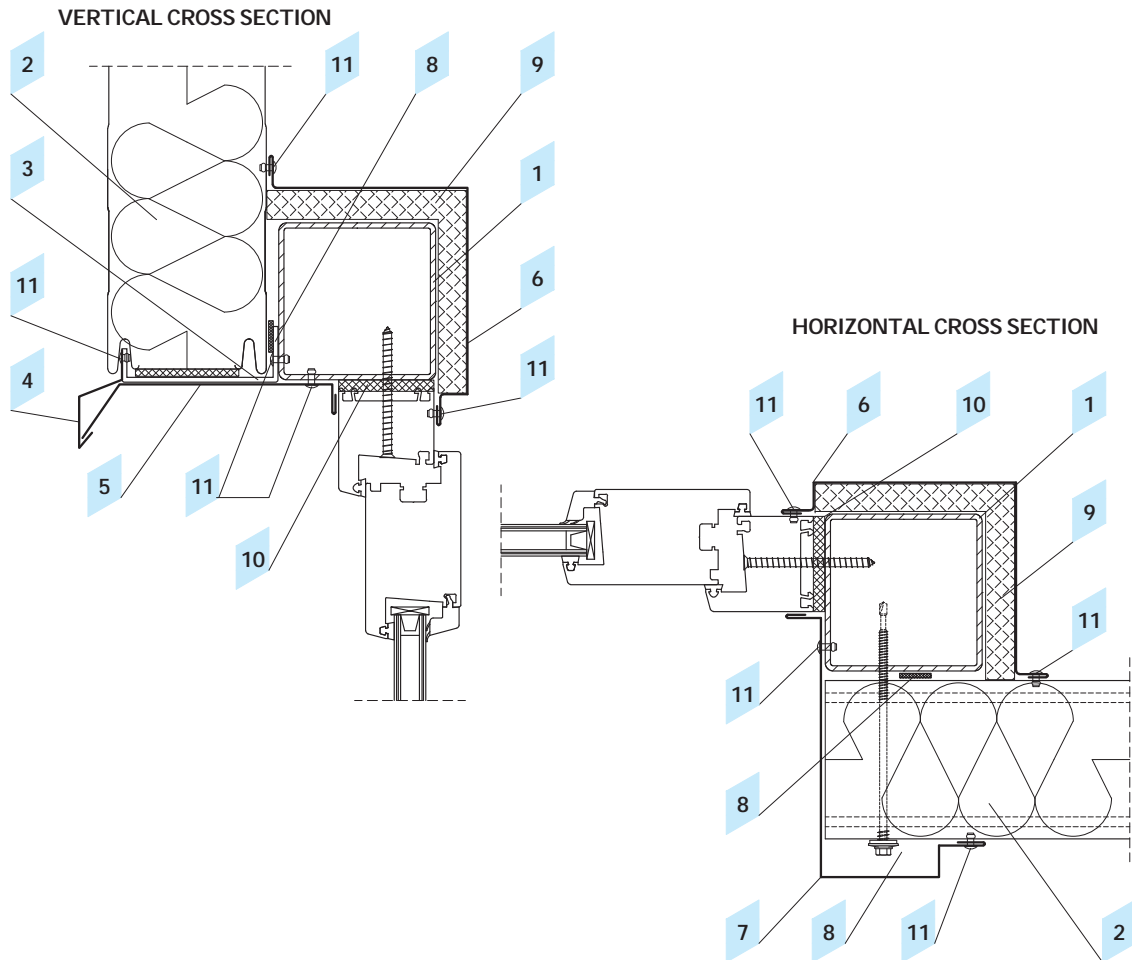
Object	Product code
1 Construction element	
2 Wall panel ARPANEL S	ARPANEL S
3 Angle bar	
4 Lintel flashing	OBPZ-15
5 Lintel flashing	OBPZ-12
6 Eaves flashing	OBPZ-5
7 Window sill flashing	OBPZ-4
8 Window flashing	OBPZ-16
9 Corner internal flashing	OBPZ-11
10 Acoustic and insulating gasket PES	US-04
11 Thermal insulation	
12 Thermal insulation	
13 Steel tight rivet (every 300 mm)	NT
14 Self-drilling screw	Z-01
15 Corner internal flashing	OBPI-15





### 1.13 Gate detail

Object	Product code
1 Construction element	
2 Wall panel ARPANEL S	ARPANEL S
3 Angle bar	
4 Profile	
5 Eaves flashing	OBPZ-5
6 Gate flashing	OBPZ-13
7 Gate flashing	OBPZ-14
8 Side flashing	OBPZ-17
9 Acoustic and insulating gasket PES	US-04
10 Thermal insulation	
11 Steel tight rivet (every 300 mm)	NT
12 Self-drilling screw	Z-01



### 1.14 Doors detail

Object	Product code
1 Construction element	
2 Wall panel ARPANEL S	ARPANEL S
3 Channel bar	
4 Individual flashing	
5 Individual flashing	
6 Individual flashing	
7 Individual flashing	
8 Acoustic and insulating gasket PES	US-04
9 Thermal insulation	
10 Thermal insulation	
11 Steel tight rivet (every 300 mm)	NT
12 Self-drilling screw	Z-01

# Vertical facade system

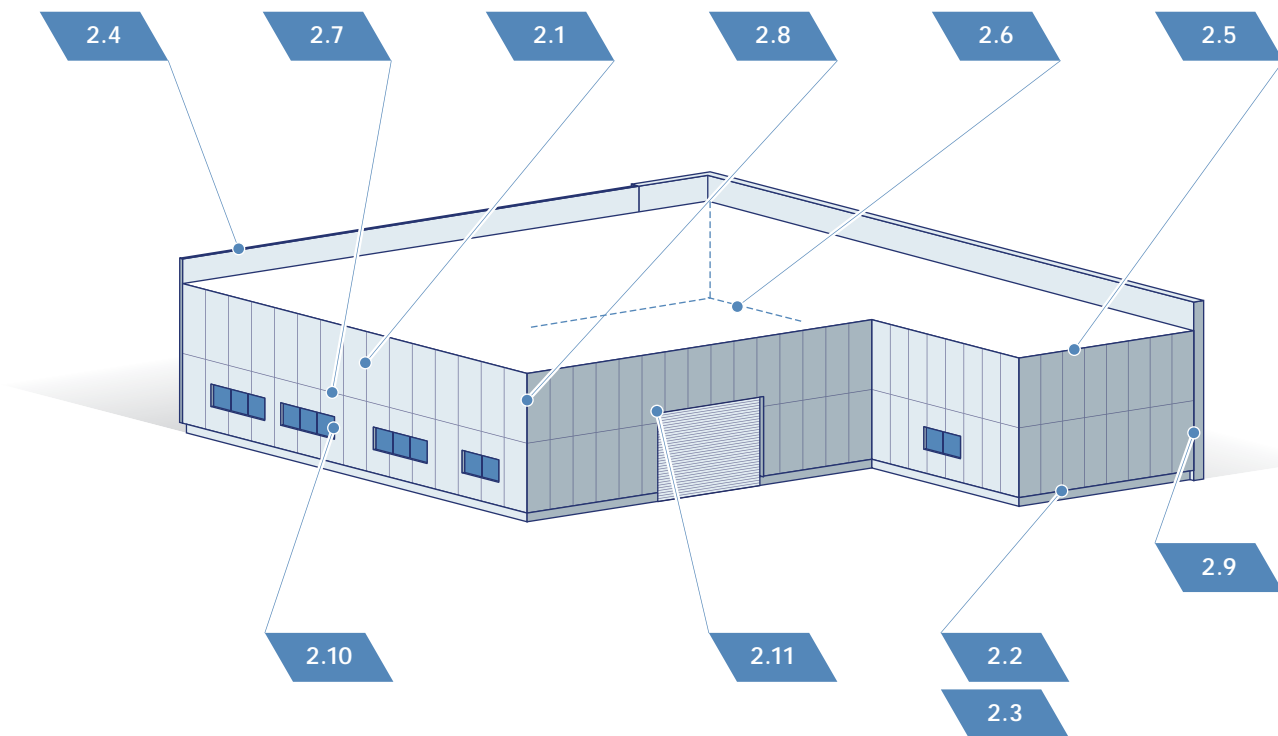
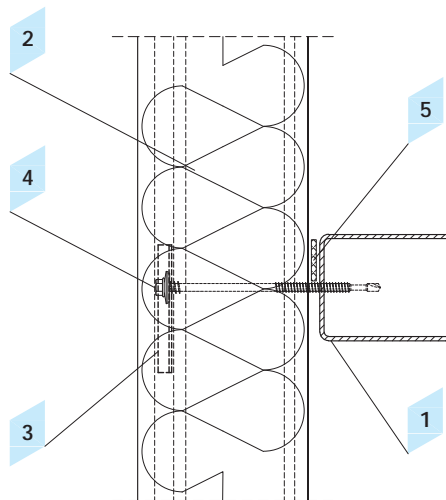


Diagram of placement of exemplary technical details

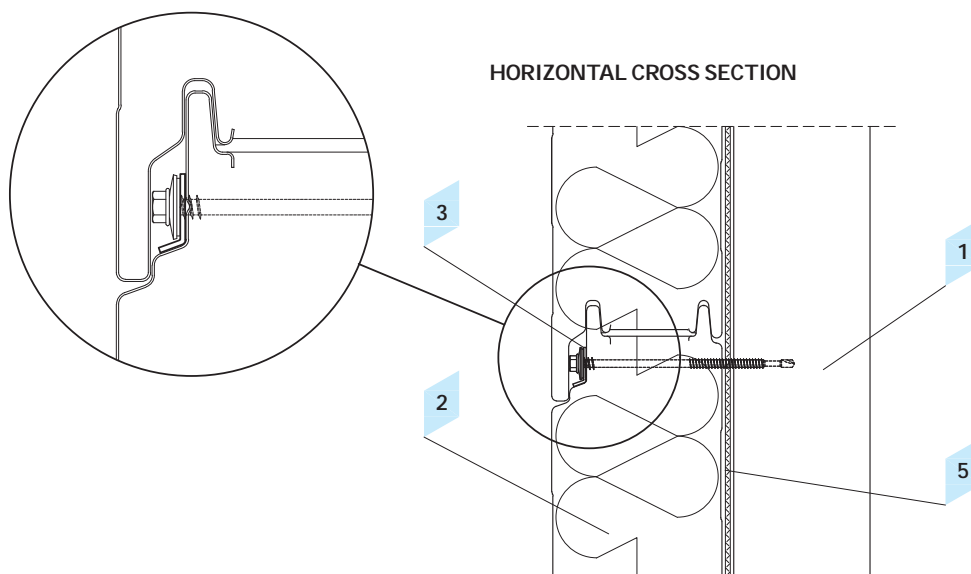
**Object**

- 2.1 Panels connection detail
- 2.2 Panels connection detail before the substructure - withdrawn plinth
- 2.3 Panels connection detail on the substructure - extended plinth
- 2.4 Attic detail
- 2.5 Wall and roof panels connection detail
- 2.6 Detail of fastening panels to the floor
- 2.7 Prolongation panels detail
- 2.8 External corner detail
- 2.9 Panel junction to brick wall detail
- 2.10 Window detail
- 2.11 Gate detail

VERTICAL CROSS SECTION



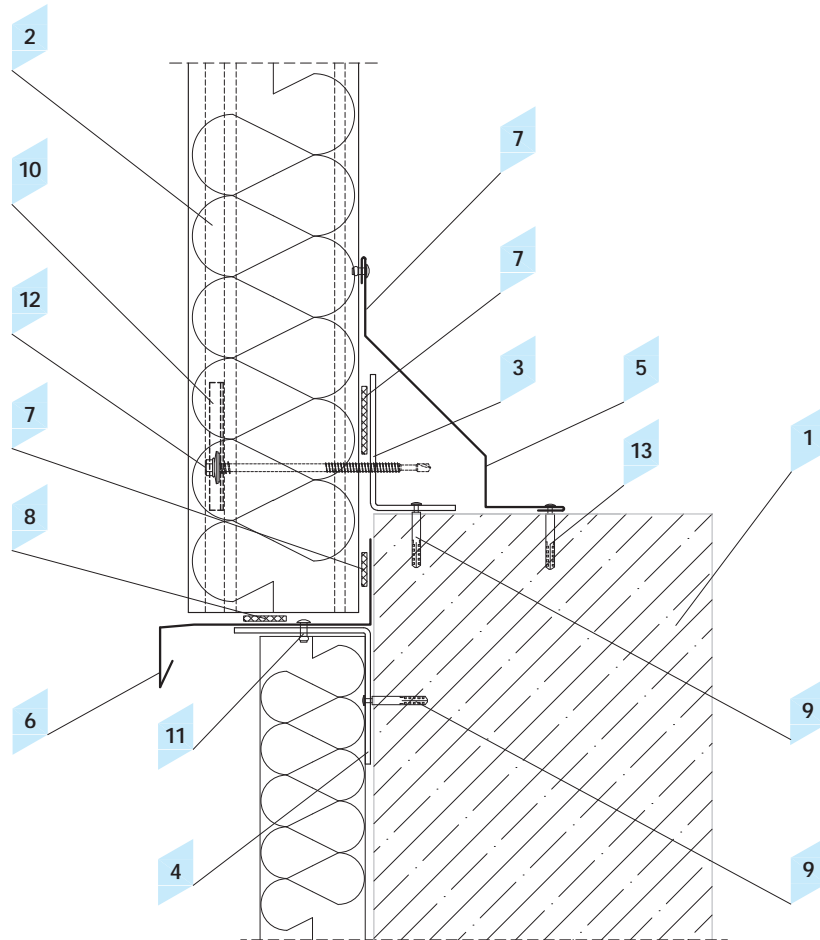
HORIZONTAL CROSS SECTION



The designer determines the number and type of fasteners on the basis of loads, taking into account the type and thickness of the structure and the function of the partition.

**2.1 Panels connection detail**

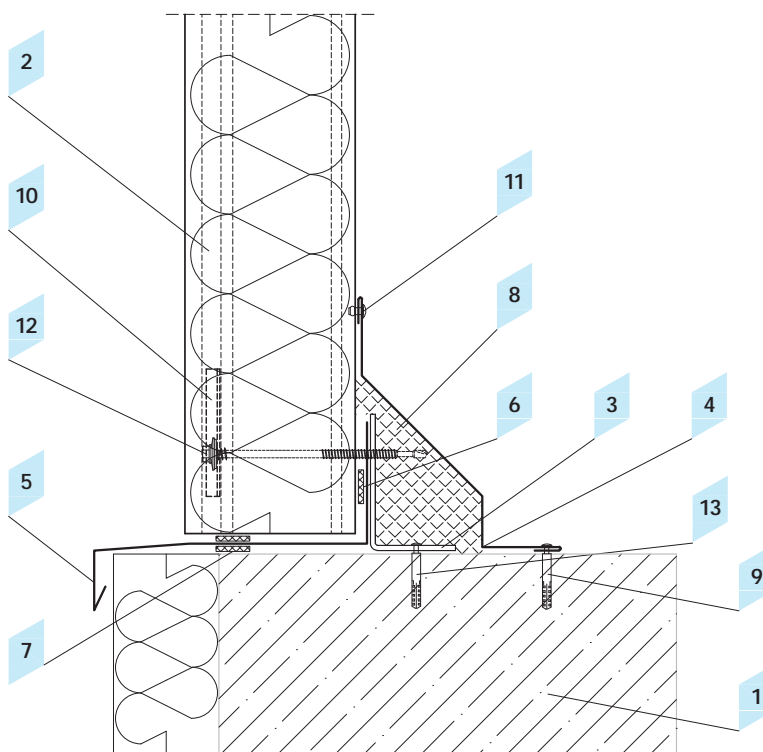
Object	Product code
1 Construction element	
2 Wall panel ARPANEL SU	ARPANEL SU
3 Pressure distributor plate	RN-75
4 Self-drilling screw	Z-01
5 Acoustic and insulating gasket PES	US-04



The designer determines the number and type of fasteners on the basis of loads, taking into account the type and thickness of the structure and the function of the partition.

### 2.2 Panels connection detail before the substructure – withdrawn plinth

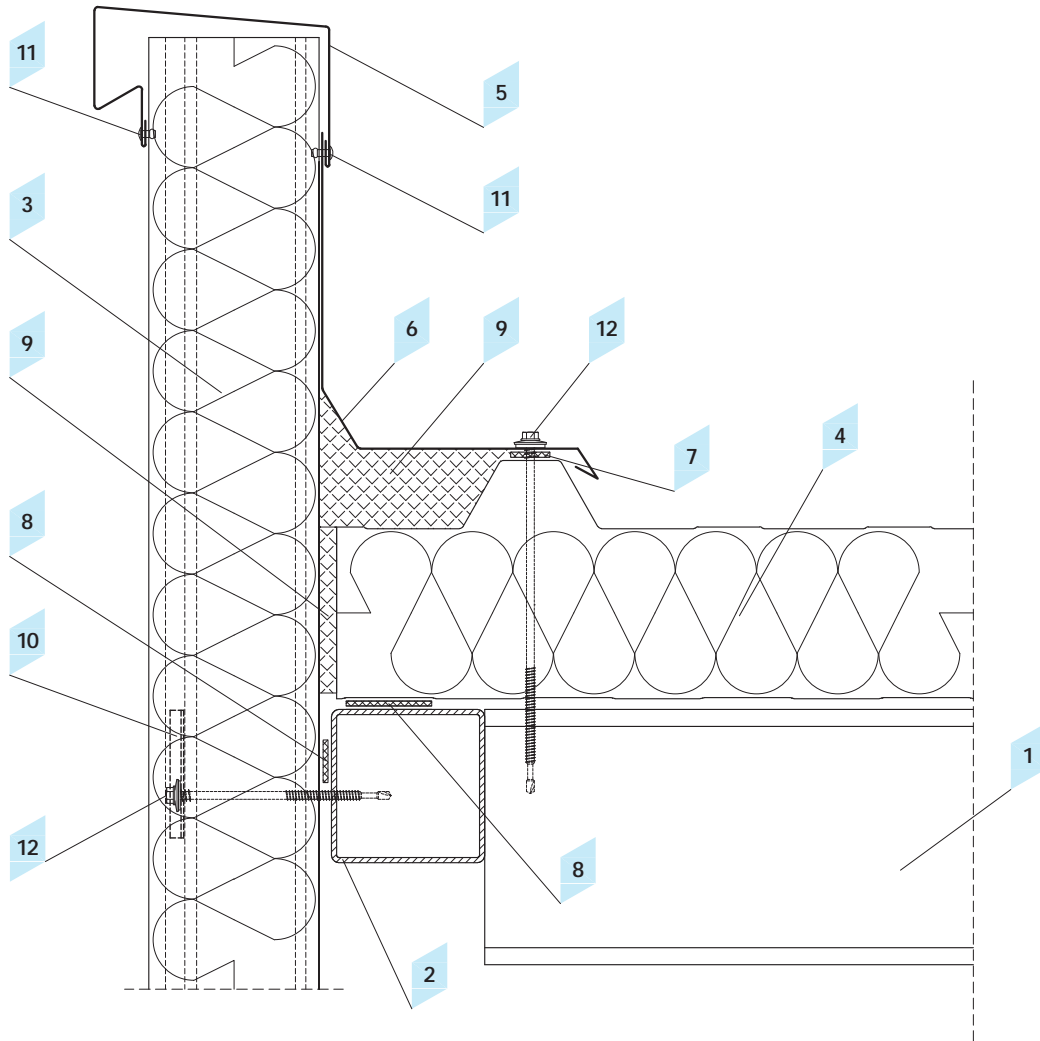
Object	Product code
1 Substructure	
2 Wall panel ARPANEL SU	ARPANEL SU
3 Fixing flashing	
4 Fixing flashing	
5 Shield internal flashing	OBPI-1
6 Plinth flashing	OBPI-2
7 Acoustic and insulating gasket PES	US-04
8 Expanding gasket PURS	US-05
9 Fastening accessory	
10 Pressure distributor plate	RN-75
11 Steel tight rivet (every 300 mm)	NT
12 Self-drilling screw	Z-01
13 Expansion fastener	



The designer determines the number and type of fasteners on the basis of loads, taking into account the type and thickness of the structure and the function of the partition.

**2.3 Panels connection detail on the substructure – extended plinth**

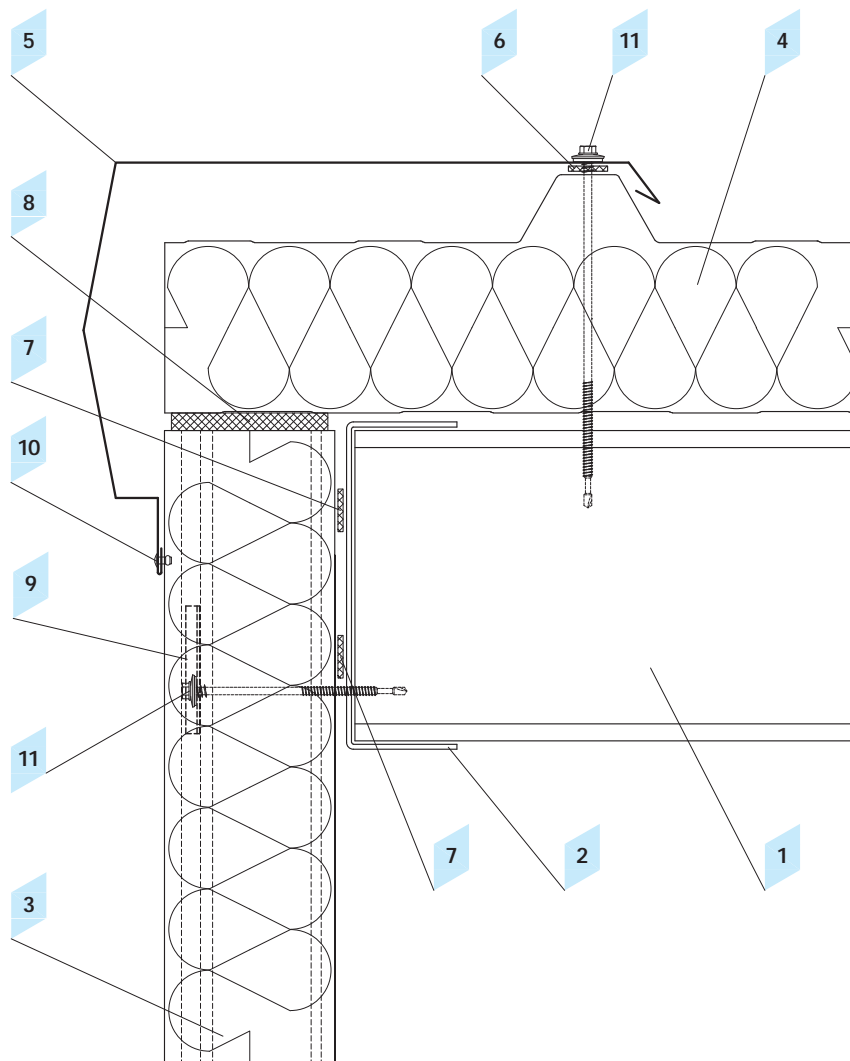
Object	Product code
1 Substructure	
2 Wall panel ARPANEL SU	ARPANEL SU
3 Angle bar	
4 Shield internal flashing	OBPI-1
5 Plinth flashing	OBPI-6
6 Acoustic and insulating gasket PES	US-04
7 Expanding gasket PURS	US-05
8 Thermal insulation	
9 Expansion fastener	
10 Pressure distributor plate	RN-75
11 Steel tight rivet (every 300 mm)	NT
12 Self-drilling screw	Z-01
13 Fastening accessory	



The designer determines the number and type of fasteners on the basis of loads, taking into account the type and thickness of the structure and the function of the partition.

### 2.4 Attic detail

Object	Product code
1 Construction element	
2 Construction element	
3 Wall panel ARPANEL SU	ARPANEL SU
4 Roof panel ARPANEL D	ARPANEL D
5 Attic belt flashing	OBPI-7
6 Angle flashing	OBPI-8
7 Acoustic and insulating gasket PES	US-02
8 Expanding gasket PURS	US-05
9 Thermal insulation	
10 Pressure distributor plate	RN-75
11 Steel tight rivet (every 300mm)	NT
12 Self-drilling screw	Z-01

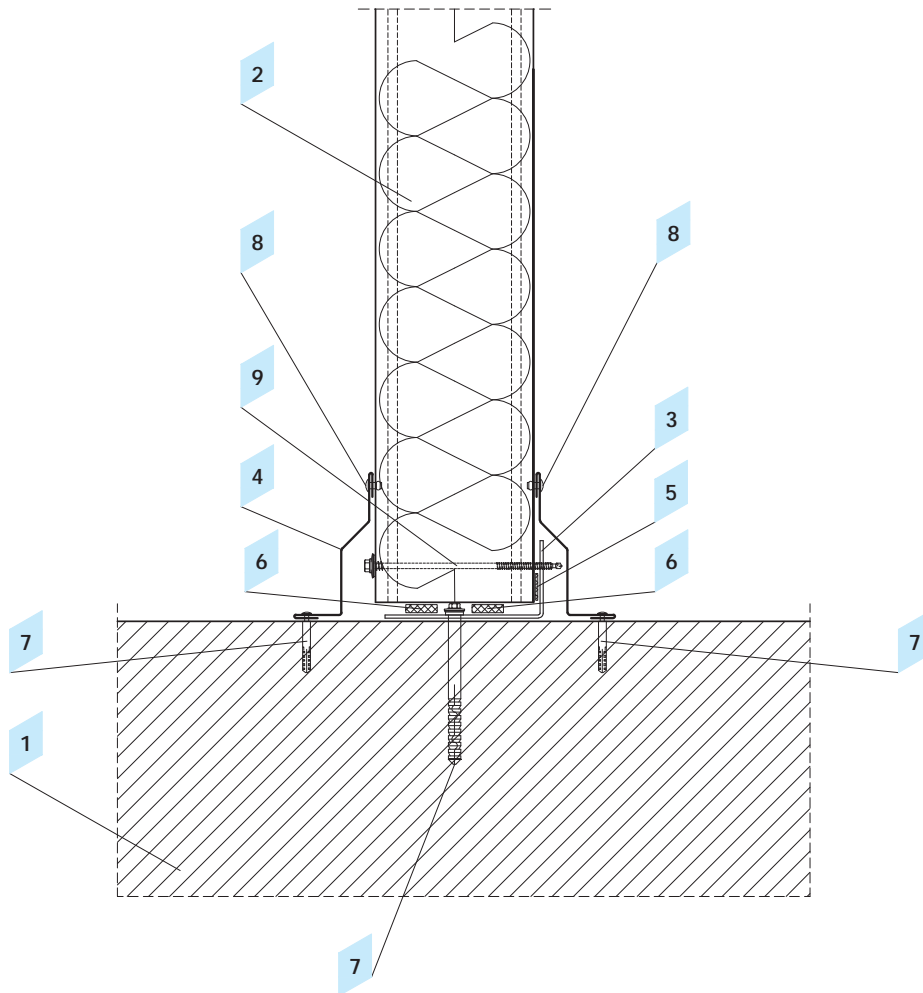


The designer determines the number and type of fasteners on the basis of loads, taking into account the type and thickness of the structure and the function of the partition.

2.5 Wall and roof panels connection detail

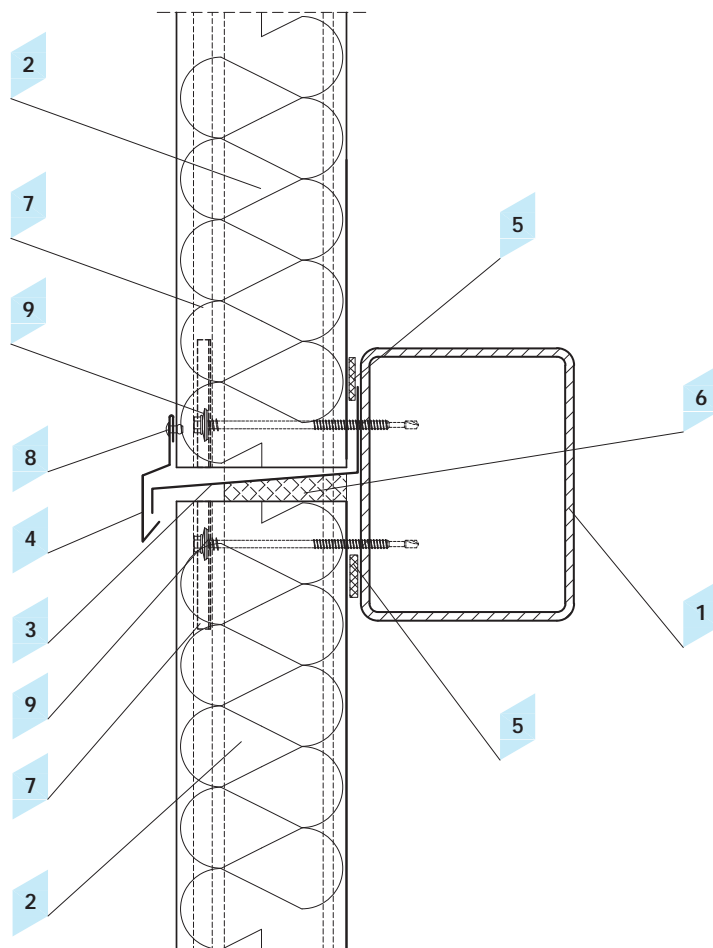
Object	Product code
1 Construction element	
2 Construction element	
3 Wall panel ARPANEL SU	ARPANEL SU
4 Roof panel ARPANEL D	ARPANEL D
5 Side wind flashing	OBPI-9
6 Acoustic and insulating gasket PES	US-02
7 Acoustic and insulating gasket PES	US-03
8 Thermal insulation	
9 Pressure distributor plate	RN-75
10 Steel tight rivet (every 300 mm)	NT
11 Self-drilling screw	Z-01





### 2.6 Detail of fastening panels to the floor

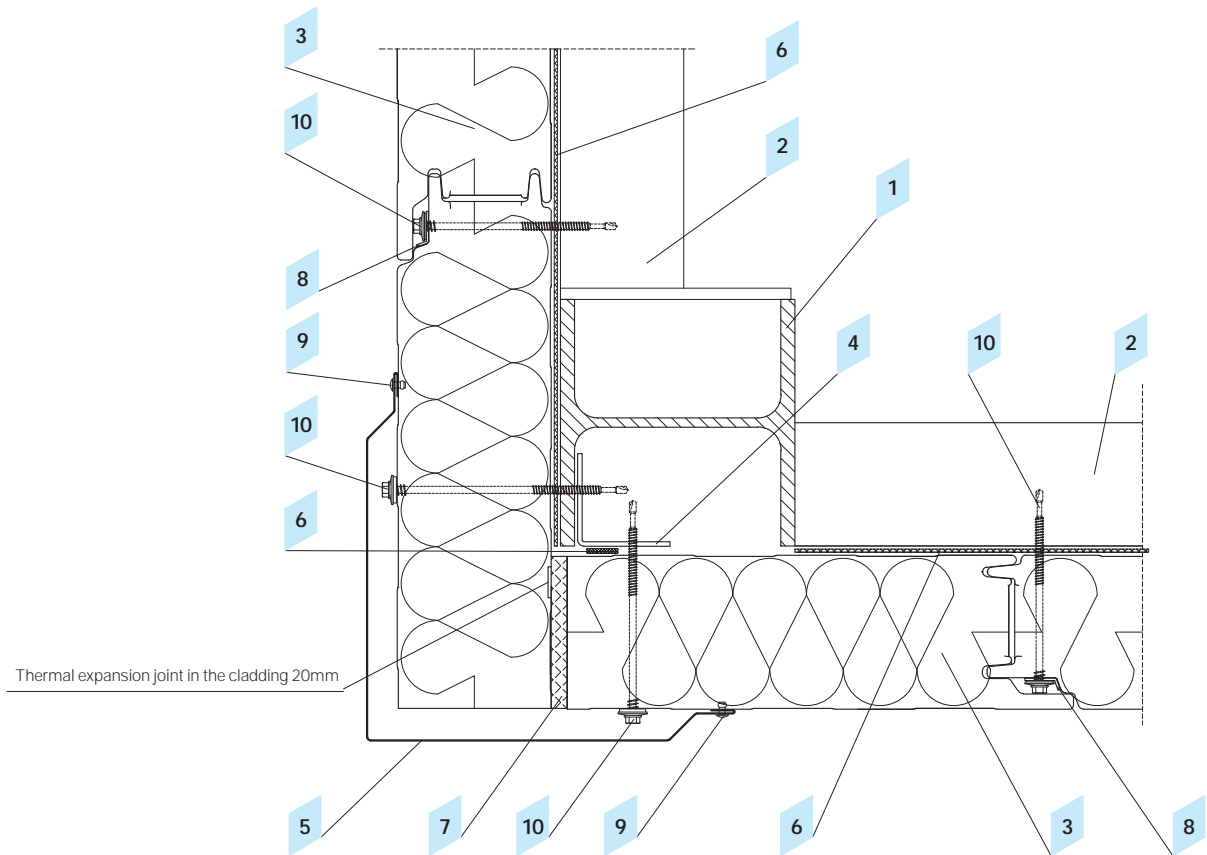
Object	Product code
1 Flooring	
2 Wall panel ARPANEL S	ARPANEL S
3 Fixing flashing	
4 Mask flashing	OBPI-11
5 Acoustic and insulating gasket PES	US-04
6 Expanding gasket PURS	US-05
7 Expansion fastener	
8 Steel tight rivet (every 300 mm)	NT
9 Self-drilling screw	Z-01



The designer determines the number and type of fasteners on the basis of loads, taking into account the type and thickness of the structure and the function of the partition.

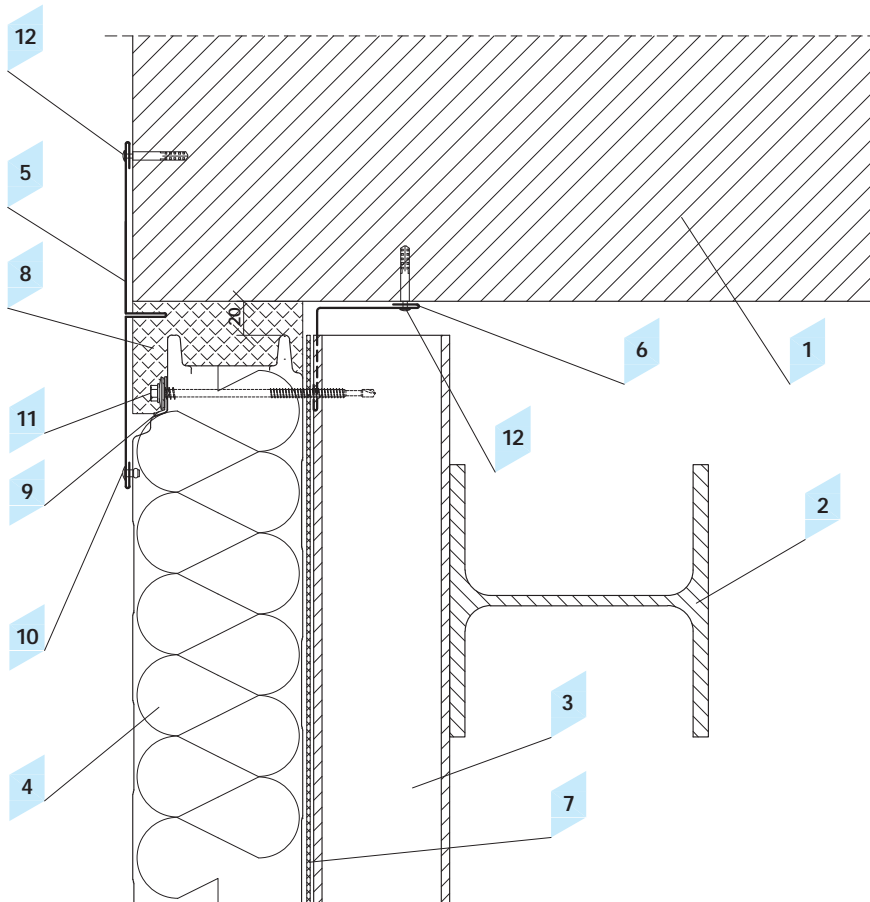
**2.7 Prolongation panels detail**

Object	Product code
1 Construction element	
2 Wall panel ARPANEL SU	ARPANEL SU
3 Mask flashing	OBPI-12
4 Eaves flashing	OBPZ-5
5 Acoustic and insulating gasket PES	US-04
6 Thermal insulation	
7 Pressure distributor plate	RN-75
8 Steel tight rivet (every 300 mm)	NT
9 Self-drilling screw	Z-01



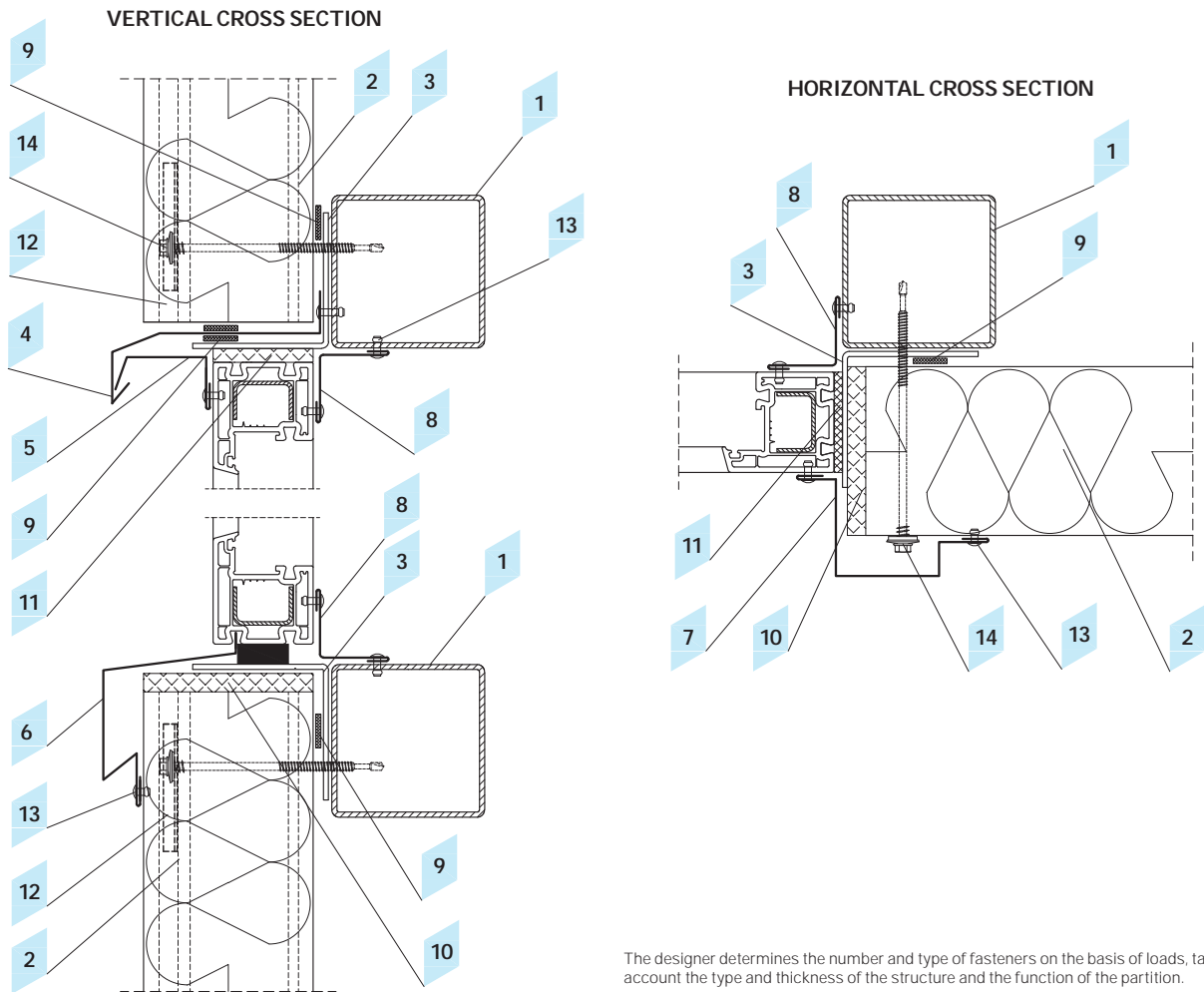
### 2.8 External corner detail

Object	Product code
1 Construction element	
2 Construction element	
3 Wall panel ARPANEL SU	ARPANEL SU
4 Angle bar	
5 Corner flashing	OBPI-13
6 Acoustic and insulating gasket PES	US-04
7 Thermal insulation	
8 Pressure distributor plate	RN-75
9 Steel tight rivet (every 300 mm)	NT
10 Self-drilling screw	Z-01



**2.9 Panel junction to brick wall detail**

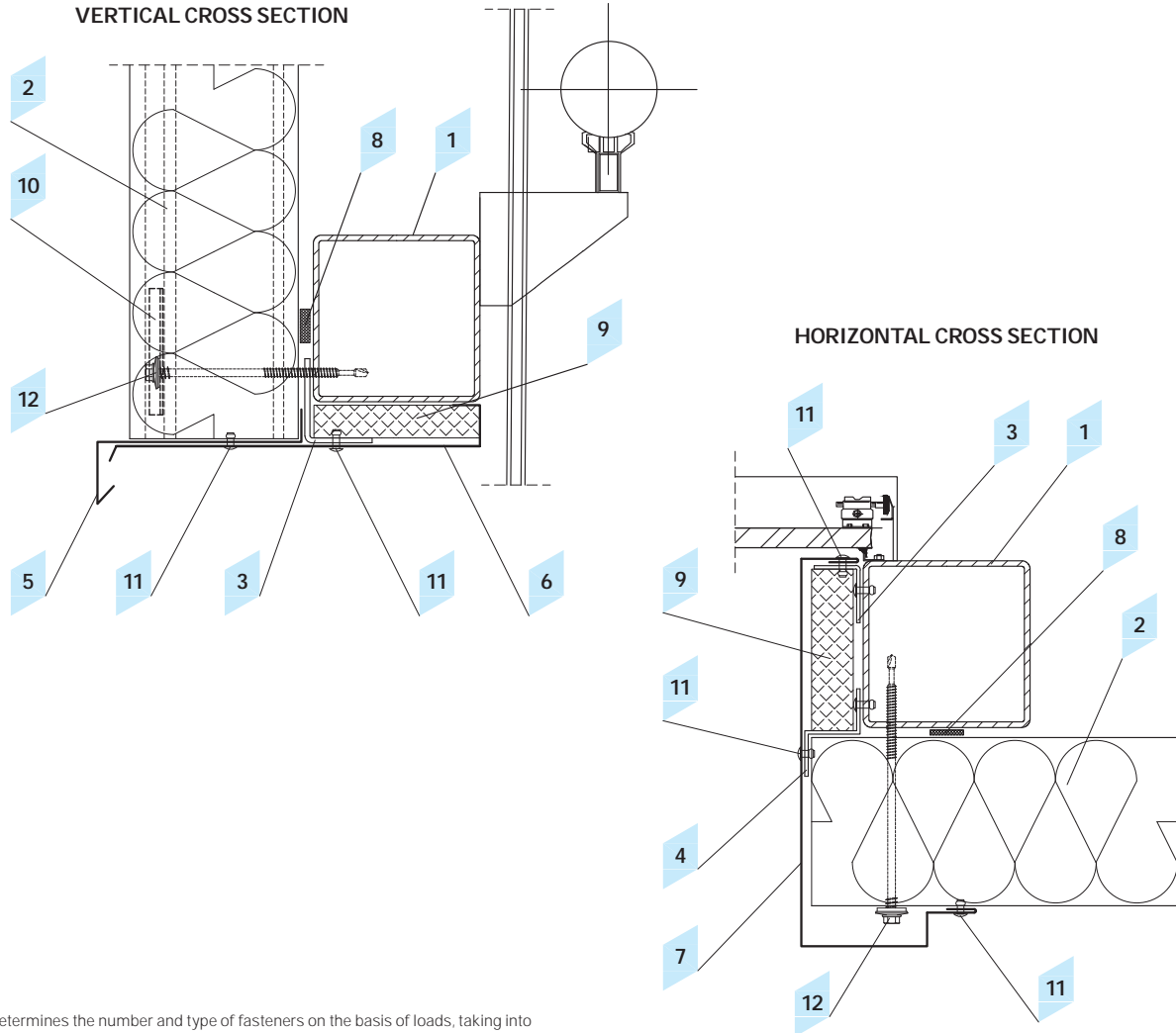
Object	Product code
1 Brick wall	
2 Construction element	
3 Construction element	
4 Wall panel ARPANEL SU	ARPANEL SU
5 Mask gap flashing	OBPI-14
6 Corner internal flashing	OBPI-15
7 Acoustic and insulating gasket PES	US-04
8 Thermal insulation	
9 Pressure distributor plate	RN-75
10 Steel tight rivet (every 300mm)	NT
11 Self-drilling screw	Z-01
12 Expansion fastener	



The designer determines the number and type of fasteners on the basis of loads, taking into account the type and thickness of the structure and the function of the partition.

### 2.10 Window detail

Object	Product code
1 Construction element	
2 Wall panel ARPANEL SU	ARPANEL SU
3 Angle bar	
4 Lintel flashing	OBPI-16
5 Lintel flashing	OBPI-4
6 Window sill flashing	OBPI-17
7 Window flashing	OBPI-18
8 Corner internal flashing	OBPI-15
9 Acoustic and insulating gasket PES	US-04
10 Thermal insulation	
11 Thermal insulation	
12 Pressure distributor plate	RN-75
13 Steel tight rivet (every 300mm)	NT
14 Self-drilling screw	Z-01

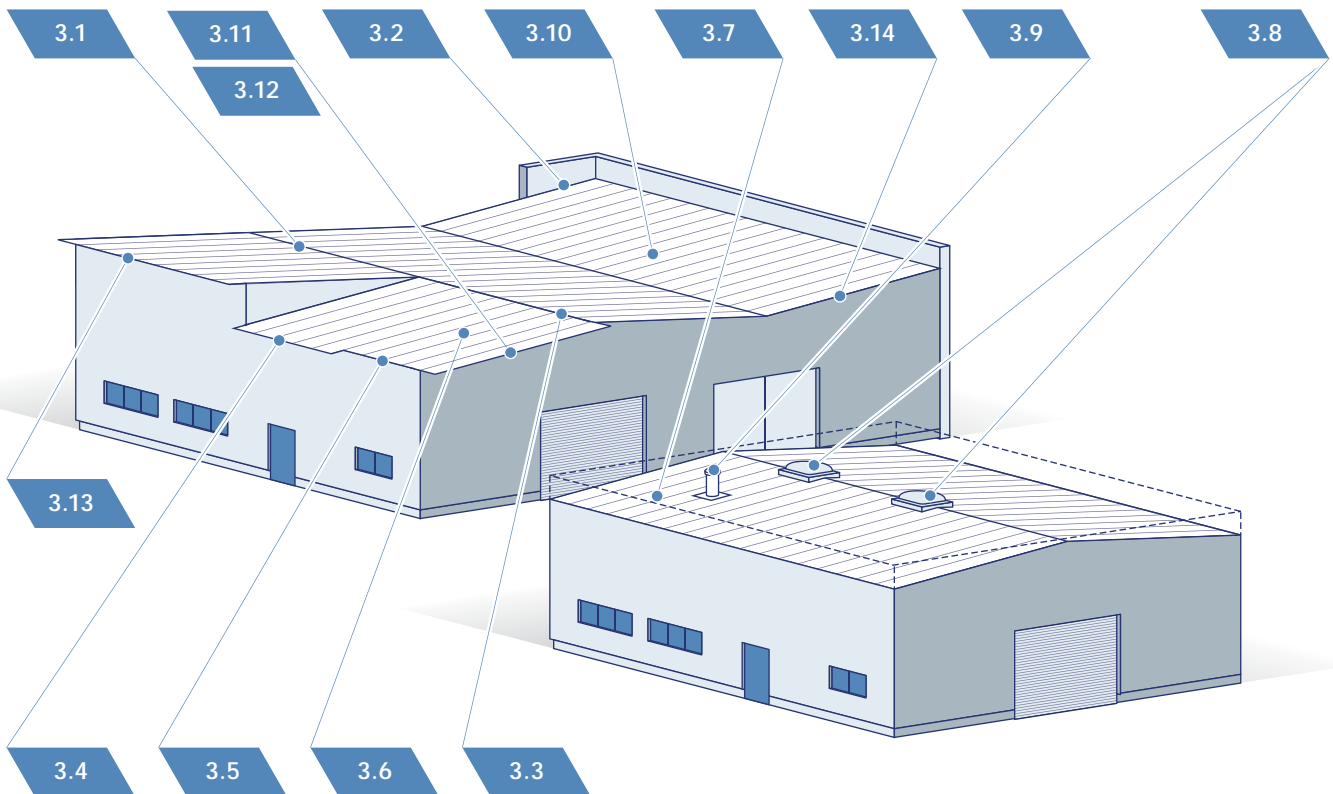


The designer determines the number and type of fasteners on the basis of loads, taking into account the type and thickness of the structure and the function of the partition

### 2.11 Gate detail

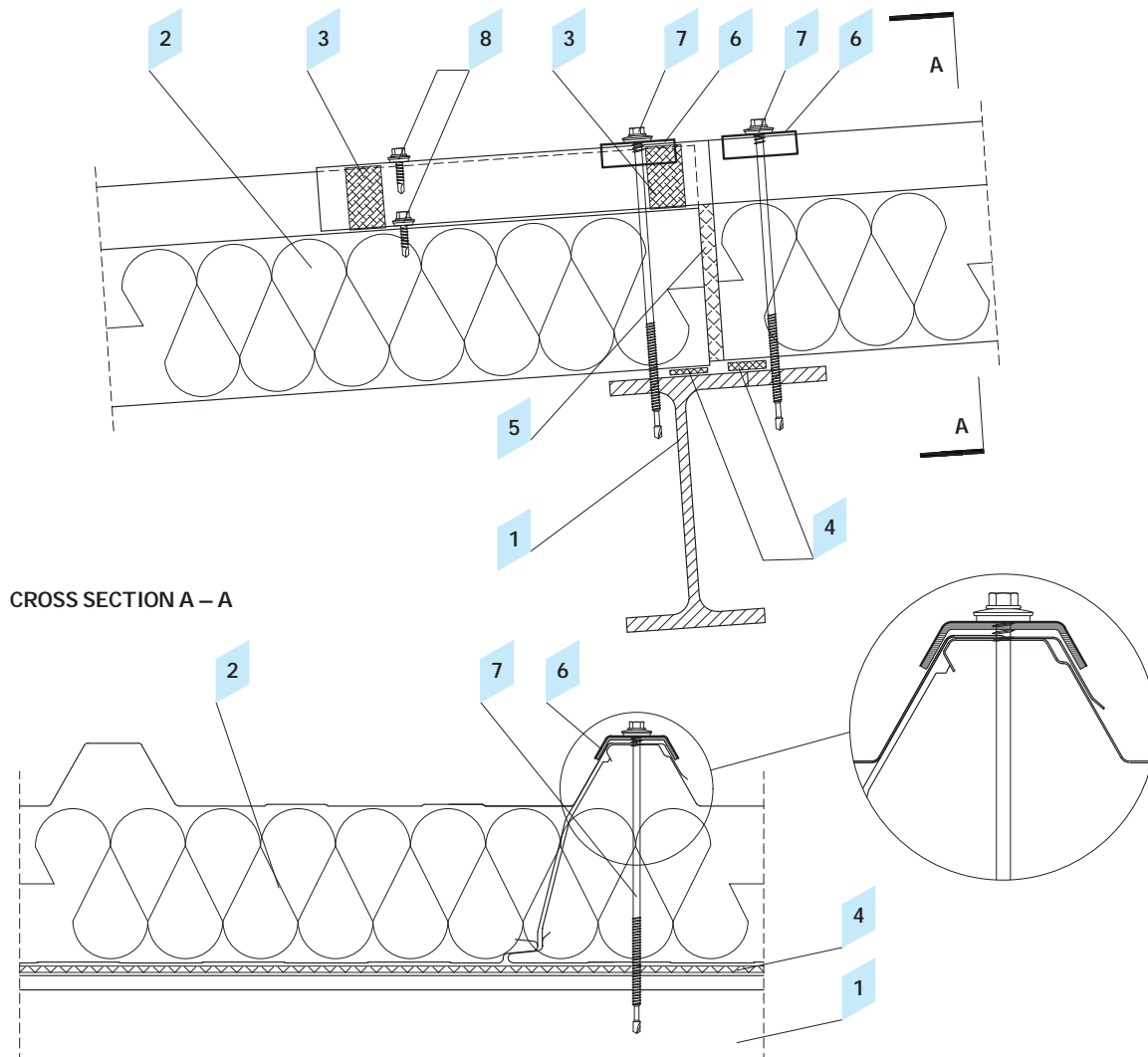
Object	Product code
1 Construction element	
2 Wall panel ARPANEL SU	ARPANEL SU
3 Angle bar	
4 Profile	
5 Gate flashing	OBPI-3
6 Gate flashing	OBPI-5
7 Side flashing	OBPI-10
8 Acoustic and insulating gasket PES	US-04
9 Thermal insulation	
10 Pressure distributor plate	RN-75
11 Steel tight rivet (every 300mm)	NT
12 Self-drilling screw	Z-01

# Roof cladding system



## Diagram of placement of exemplary technical details

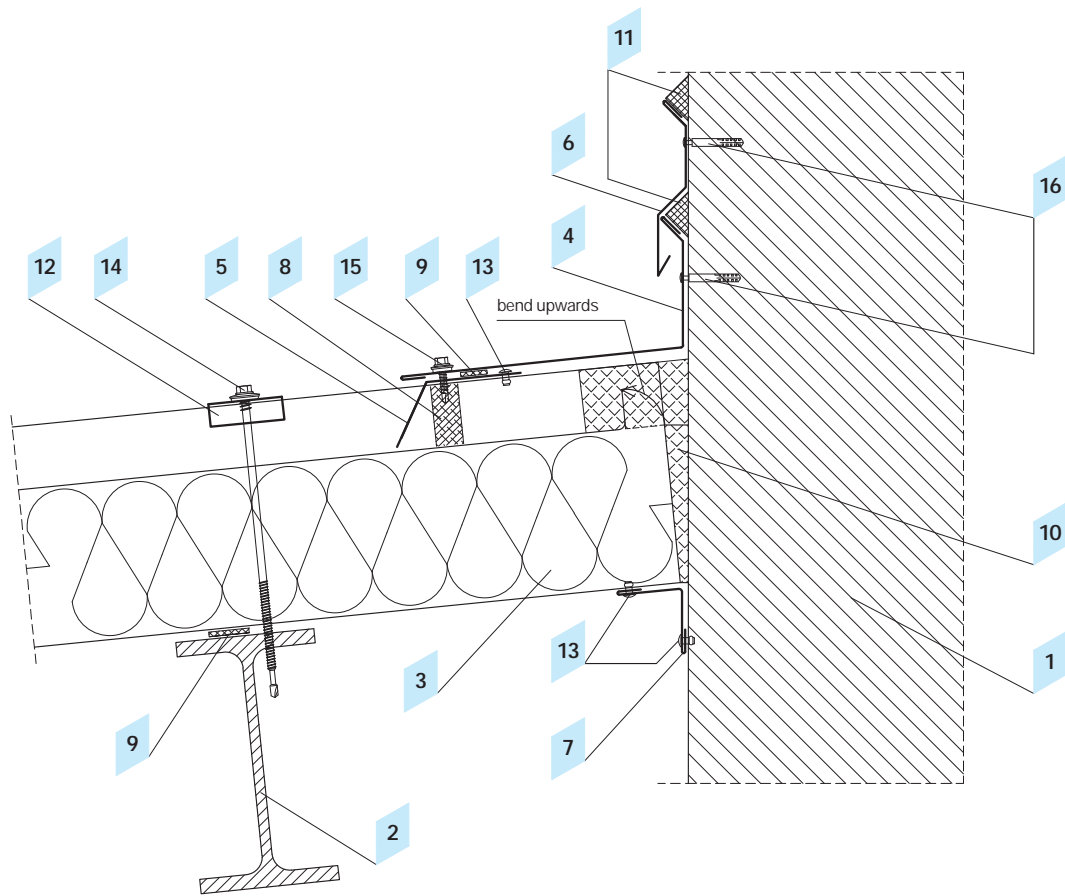
Object
3.1 Roof panels junction detail
3.2 Roof panels junction to brick wall
3.3 Ridge detail
3.4 Gutter to roof panels junction detail
3.5 Gutter to wall junction detail
3.6 Snow guard junction detail
3.7 Internal gutter detail
3.8 Detail of junction the panels with continuous rooflight at the ridge
3.9 Flange sealing detail
3.10 Dilatation detail
3.11 Detail of fastening the roof panels to the gable wall - roof with the eaves
3.12 Detail of fastening the roof panels to the gable wall - roof without the eaves
3.13 Mono-pitch roofs, with the eaves
3.14 Mono-pitch roofs, without the eaves



**3.1 Roof panels junction detail**

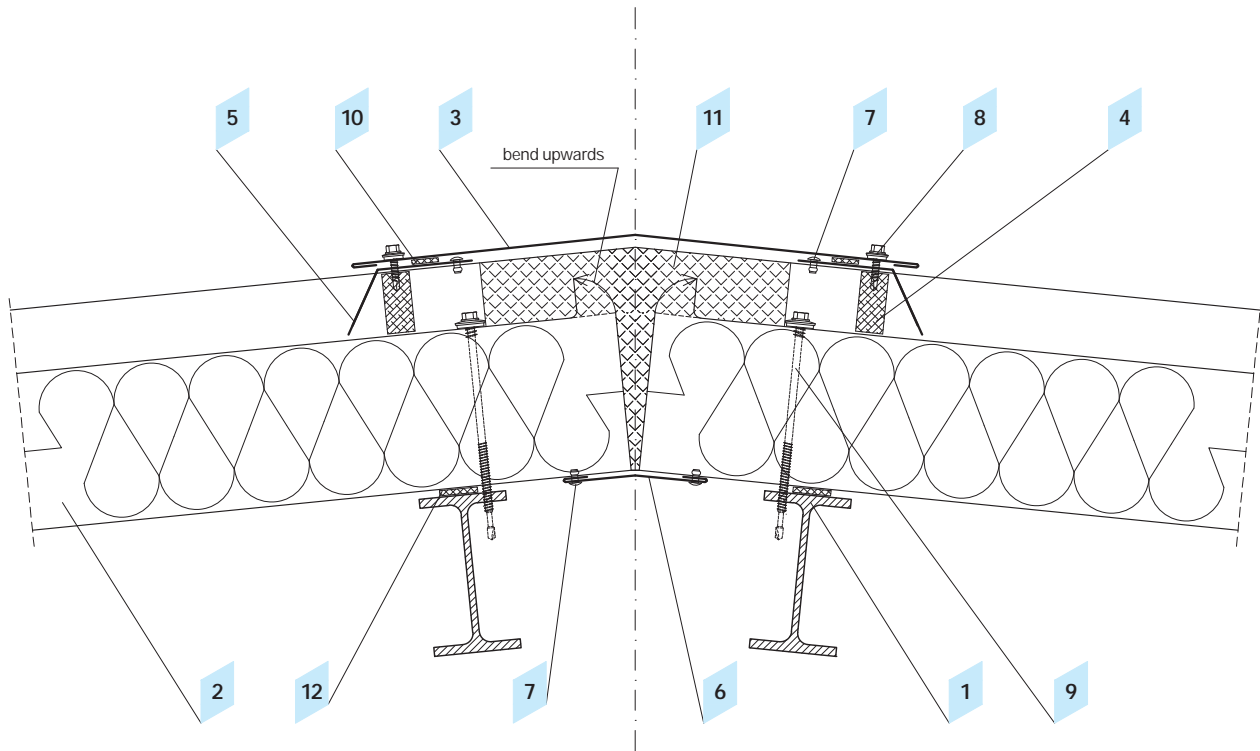
Object	Product code
1 Construction element	
2 Roof panel ARPANEL D	ARPANEL D
3 Profiled gasket	US-01
4 Acoustic and insulating gasket PES	US-04
5 Thermal insulation	
6 Calotte	KLT
7 Self-drilling screw	Z-01
8 Fastening screw	Z-03





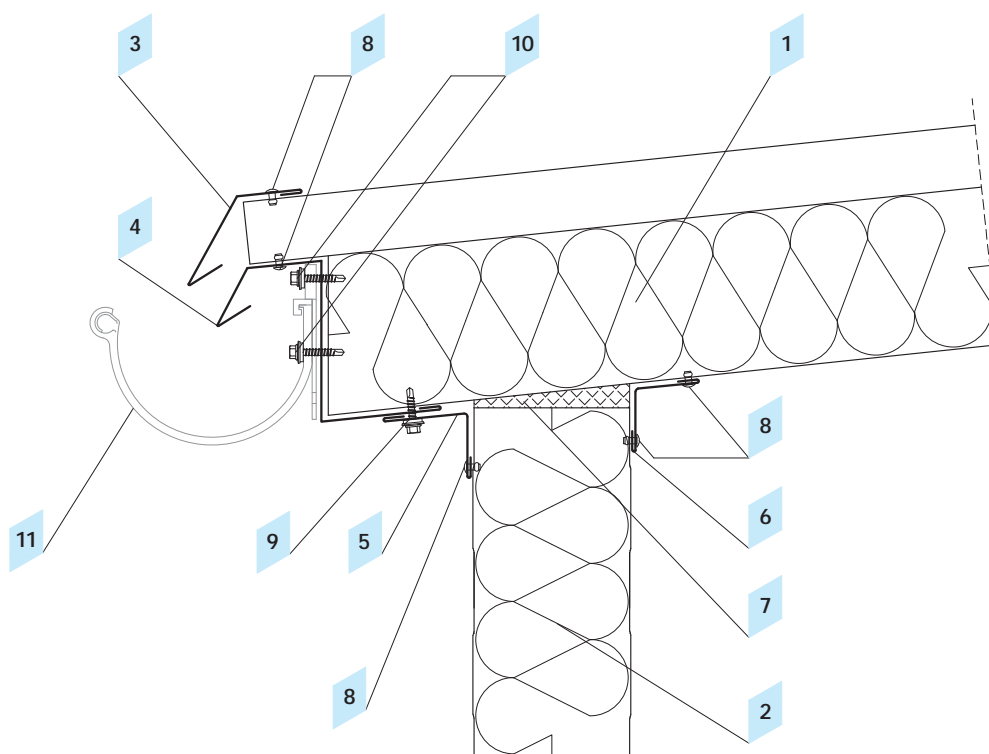
## 3.2 Roof panels junction to brick wall

Object	Product code
1 Brick wall	
2 Construction element	
3 Roof panel ARPANEL D	ARPANEL D
4 Individual flashing	
5 Mask flashing, so called "comb"	OBD-3
6 Individual flashing	
7 Corner internal flashing	OBD-6
8 Profiled gasket	US-01
9 Acoustic and insulating gasket PES	US-04
10 Thermal insulation	
11 Butyl sealing mass	
12 Calotte	KLT
13 Steel tight rivet (every 300mm)	NT
14 Self-drilling screw	Z-01
15 Fastening screw	Z-03
16 Expansion fastener	



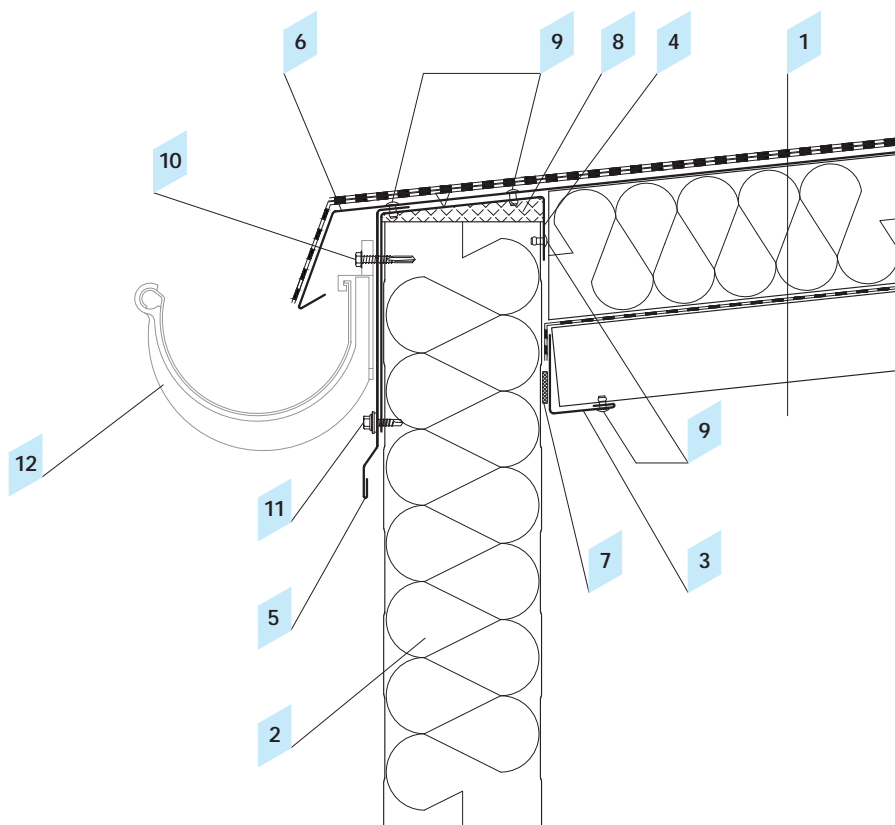
**3.3 Ridge detail**

Object	Product code
1 Construction element	
2 Roof panel ARPANEL D	ARPANEL D
3 Ridge external flashing	OBD-1
4 Profiled gasket	US-01
5 Mask flashing, so called "comb"	OBD-3
6 Ridge internal flashing	OBD-2
7 Steel tight rivet (every 300mm)	NT
8 Fastening screw	Z-03
9 Self-drilling screw	Z-01
10 Acoustic and insulating gasket PES	US-02
11 Thermal insulation	
12 Acoustic and insulating gasket PES	US-04



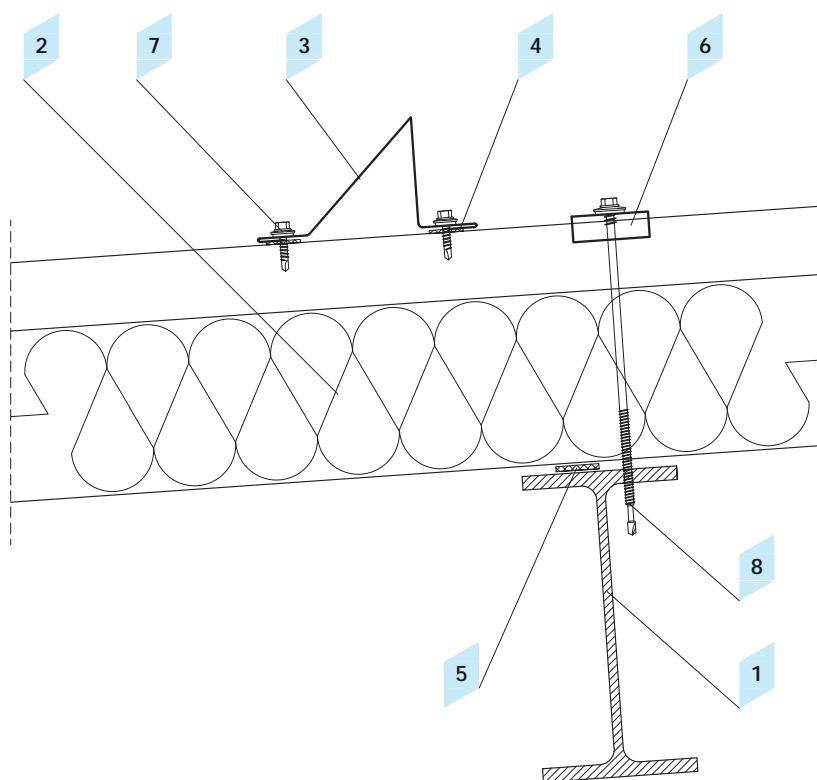
### 3.4 Gutter to roof panels junction detail

Object	Product code
1 Roof panel ARPANEL D	ARPANEL D
2 Wall panel ARPANEL S	ARPANEL S
3 Flashing for competing the roof trapezoid	OBD-4
4 Gutter line flashing	OBD-5
5 Corner internal flashing	OBD-6
6 Corner internal flashing	OBD-7
7 Thermal insulation	
8 Steel tight rivet (every 300mm)	NT
9 Fastening screw	Z-03
10 Screw to fasten the sheet to the steel structure	Z-04
11 Gutter acc. to a specialized design	



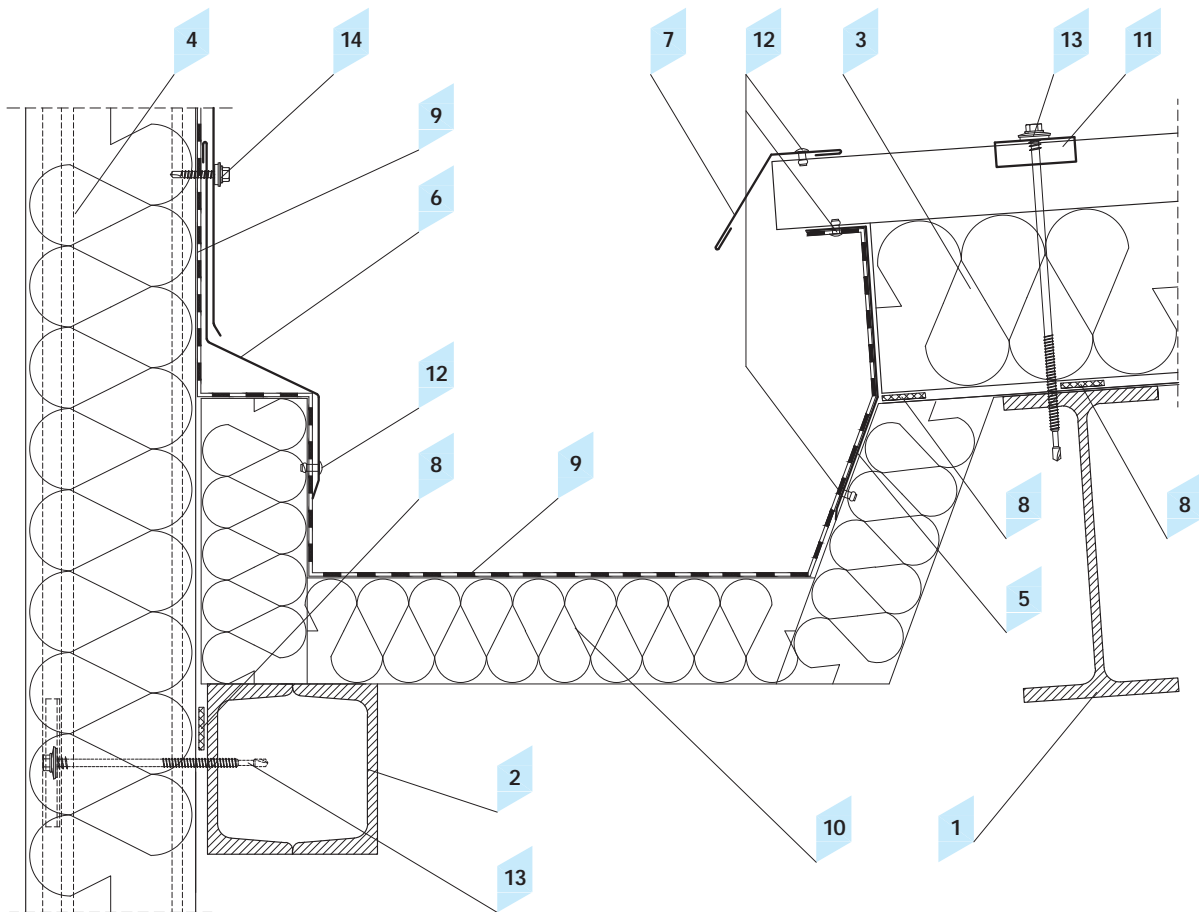
3.5 Gutter to wall junction detail

Object	Product code
1 Roofing acc. to the architectonic design	
2 Wall panel ARPANEL S	ARPANEL S
3 Closing flashing	OBD-8
4 Closing flashing	OBD-9
5 Eaves flashing	OBD-10
6 Eaves flashing	OBD-11
7 Acoustic and insulating gasket PES	US-04
8 Thermal insulation	
9 Steel tight rivet (every 300mm)	NT
10 Fastening screw	Z-03
11 Screw to fasten the sheet to the steel structure	Z-04
12 Gutter acc. to a specialized design	



### 3.6 Snow guard junction detail

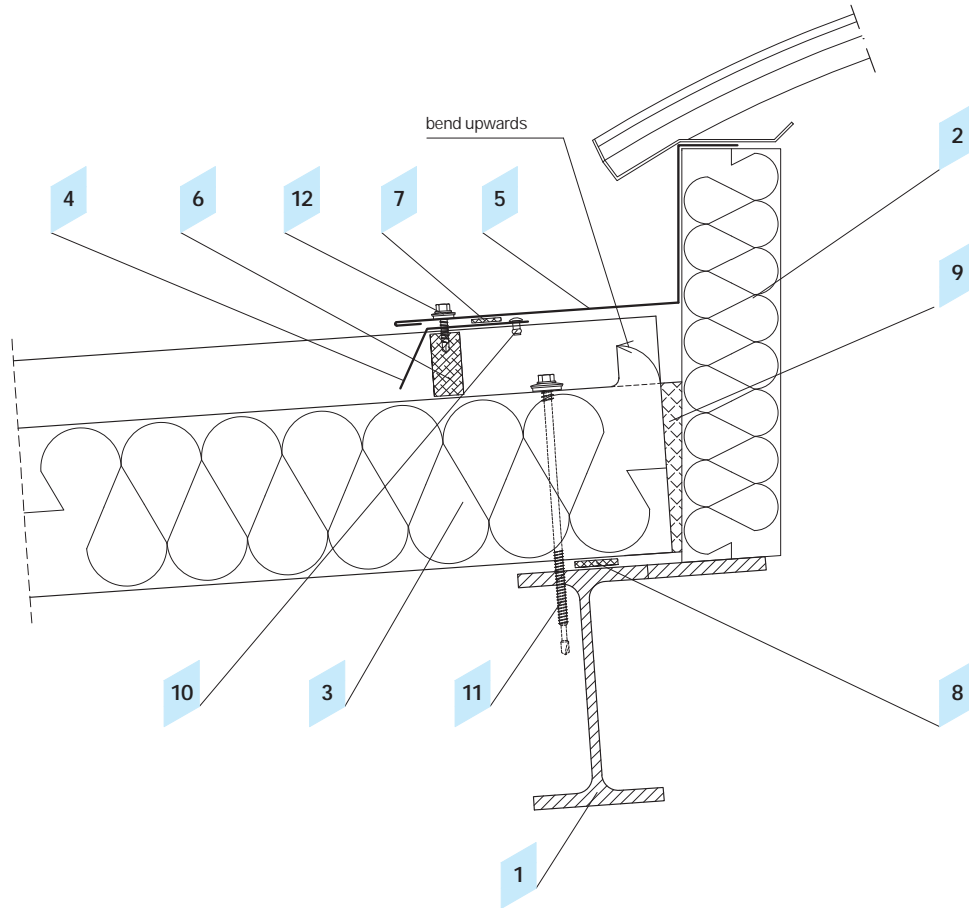
Object	Product code
1 Construction element	
2 Roof panel ARPANEL D	ARPANEL D
3 Snow guard flashing	OBD-14
4 Acoustic and insulating gasket PES	US-02
5 Acoustic and insulating gasket PES	US-04
6 Calotte	KLT
7 Fastening screw	Z-03
8 Self-drilling screw	Z-01



The designer determines the number and type of fasteners on the basis of loads, taking into account the type and thickness of the structure and the function of the partition.

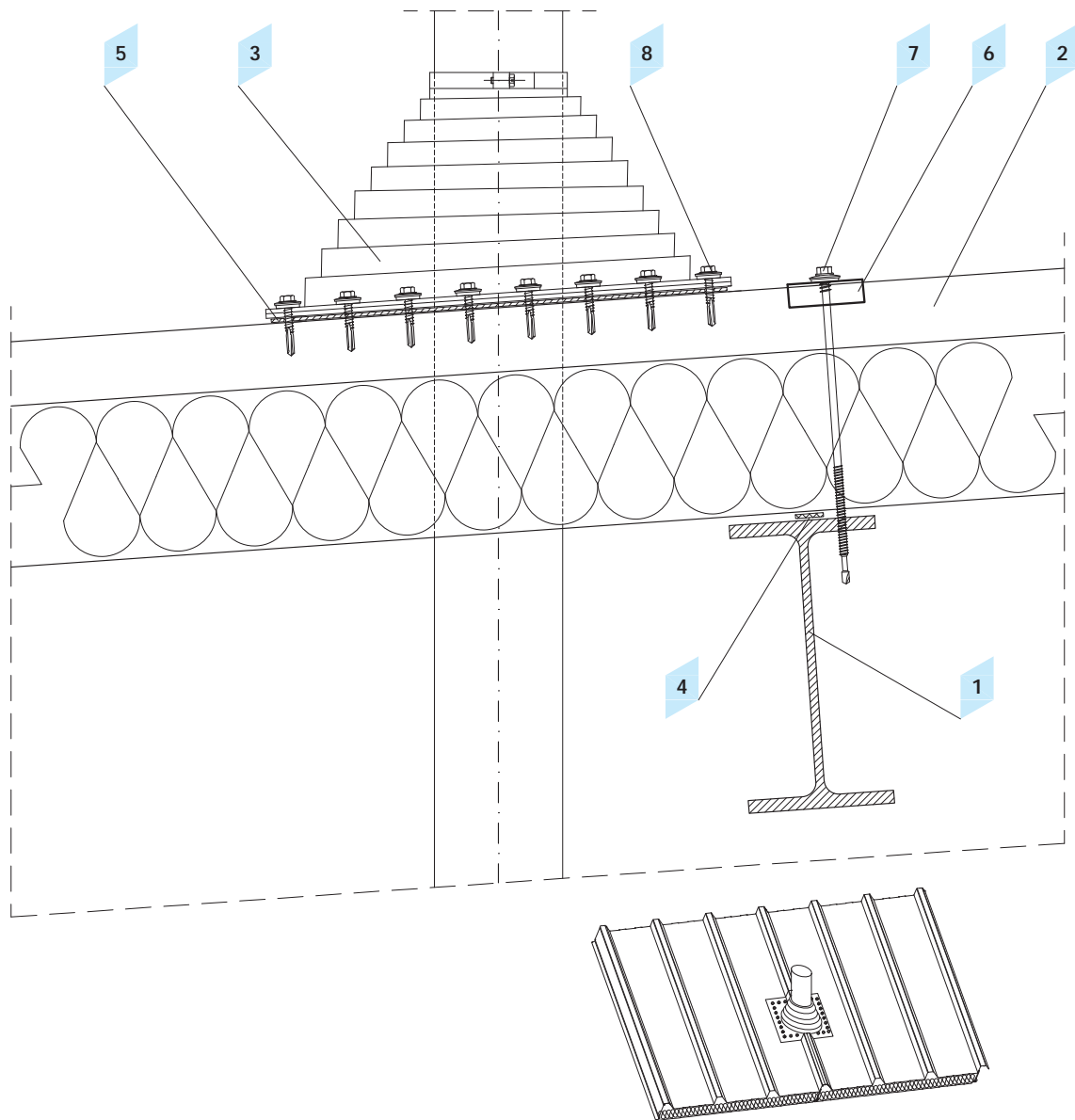
### 3.7 Internal gutter detail

Object	Product code
1 Construction element	
2 Construction element	
3 Wall panel ARPANEL SU	ARPANEL SU
4 Roof panel ARPANEL D	ARPANEL D
5 Shield flashing	OBD-15
6 Eaves flashing	OBD-12
7 Eaves flashing	OBD-13
8 Acoustic and insulating gasket PES	US-04
9 Membrane	
10 Internal gutter acc. to the architectonic design	
11 Pressure distributor plate	RN-75
12 Steel tight rivet (every 300mm)	NT
13 Self-drilling screw	Z-01
14 Fastening screw	Z-03



**3.8 Detail of junction the panels with continuous rooflight at the ridge**

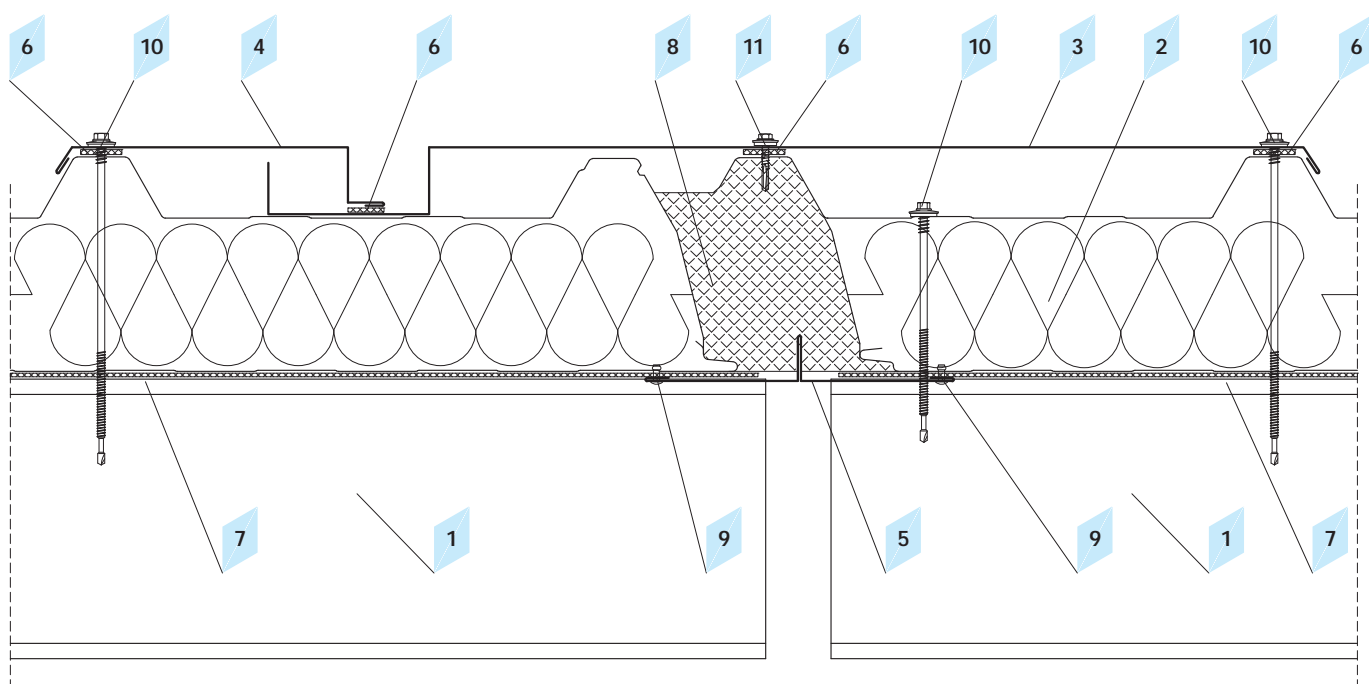
Object	Product code
1 Construction element	
2 Skylight with a base	
3 Roof panel ARPANEL D	ARPANEL D
4 Mask flashing, so called "comb"	OBD-3
5 Shield flashing	OBD-16
6 Profiled gasket	US-01
7 Acoustic and insulating gasket PES	US-02
8 Acoustic and insulating gasket PES	US-04
9 Thermal insulation	
10 Steel tight rivet (every 300mm)	NT
11 Self-drilling screw	Z-01
12 Fastening screw	Z-03



**3.9 Flange sealing detail**

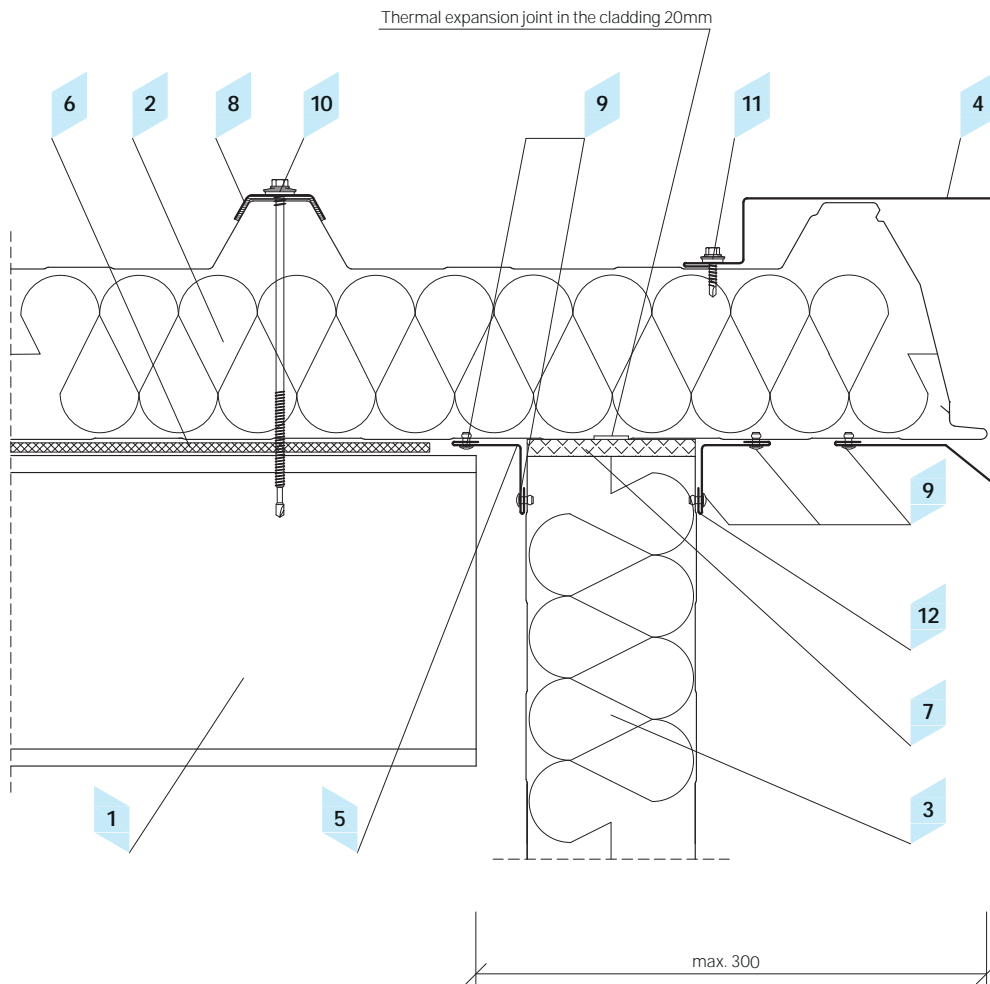
Object	Product code
1 Construction element	
2 Roof panel ARPANEL D	ARPANEL D
3 Sealing flange for passage through the roof	
4 Acoustic and insulating gasket PES	US-04
5 Sealing putty	
6 Calotte	KLT
7 Self-drilling screw	Z-01
8 Fastening screw	Z-03





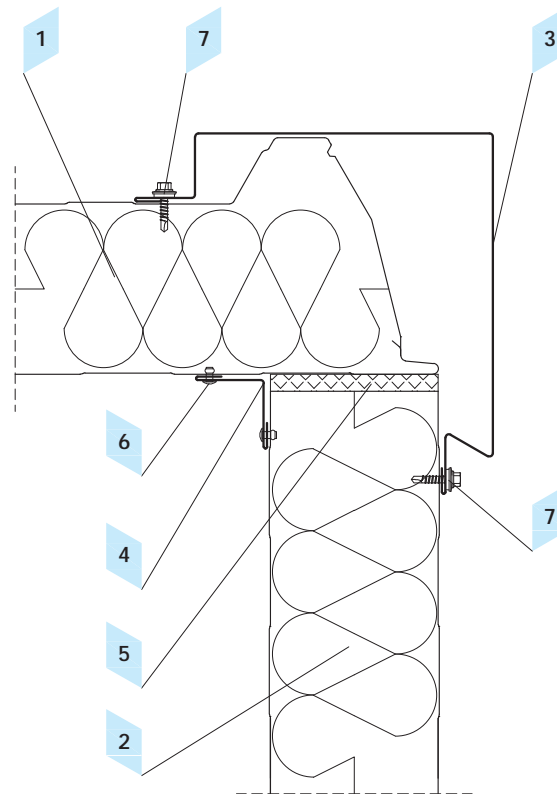
### 3.10 Dilatation detail

Object	Product code
1 Construction element	
2 Roof panel Arpanel D	ARPANEL D
3 Dilatation flashing	OBD-17
4 Dilatation flashing	OBD-18
5 Mask gap flashing	OBD-19
6 Acoustic and insulating gasket PES	US-02
7 Acoustic and insulating gasket PES	US-04
8 Thermal insulation	
9 Steel tight rivet (every 300mm)	NT
10 Self-drilling screw	Z-01
11 Fastening screw	Z-03



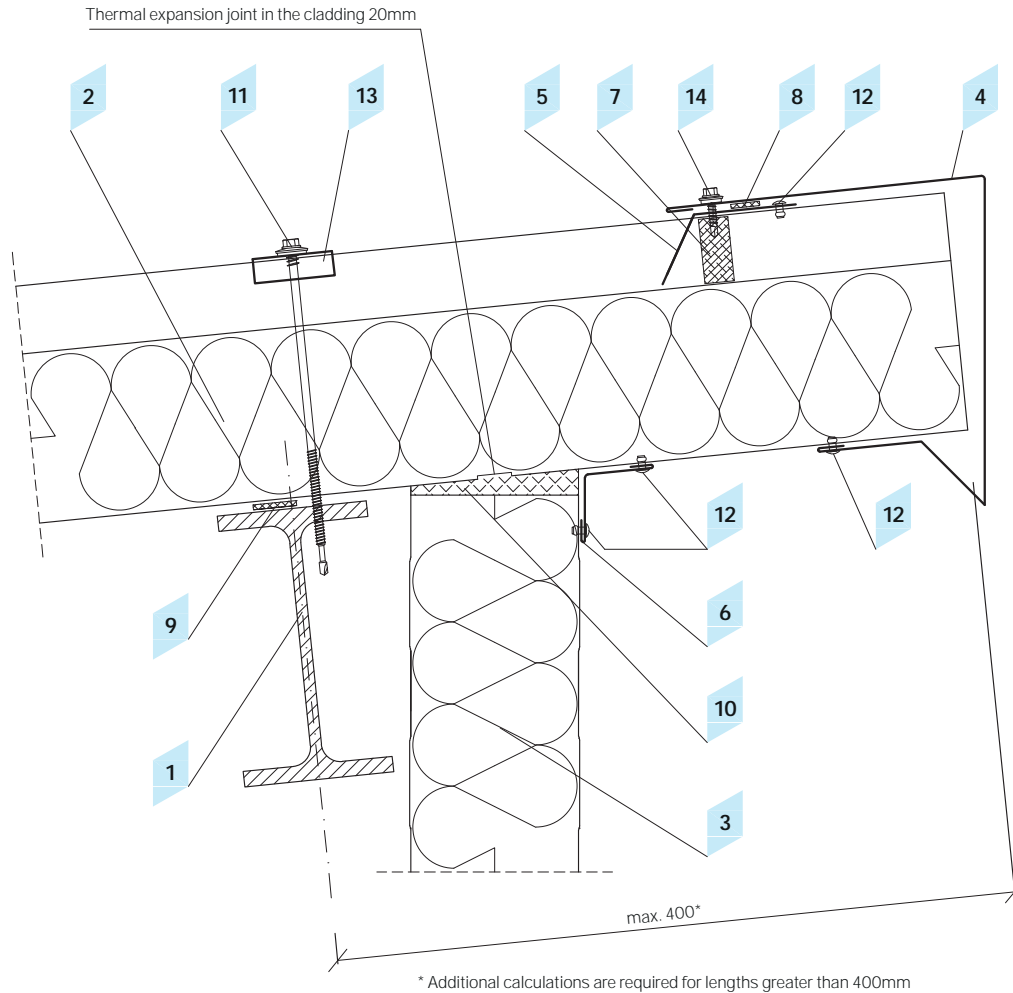
**3.11 Detail of fastening the roof panels to the gable wall - roof with the eaves**

Object	Product code
1 Purlin	
2 Roof panel ARPANEL D	ARPANEL D
3 Wall panel ARPANEL S	ARPANEL S
4 Wind flashing	OBD-20
5 Corner internal flashing	OBD-6
6 Acoustic and insulating gasket PES	US-04
7 Thermal insulation	
8 Calotte	KLT
9 Steel tight rivet (every 300mm)	NT
10 Self-drilling screw	Z-01
11 Fastening screw	Z-03
12 Corner internal flashing	OBD-7



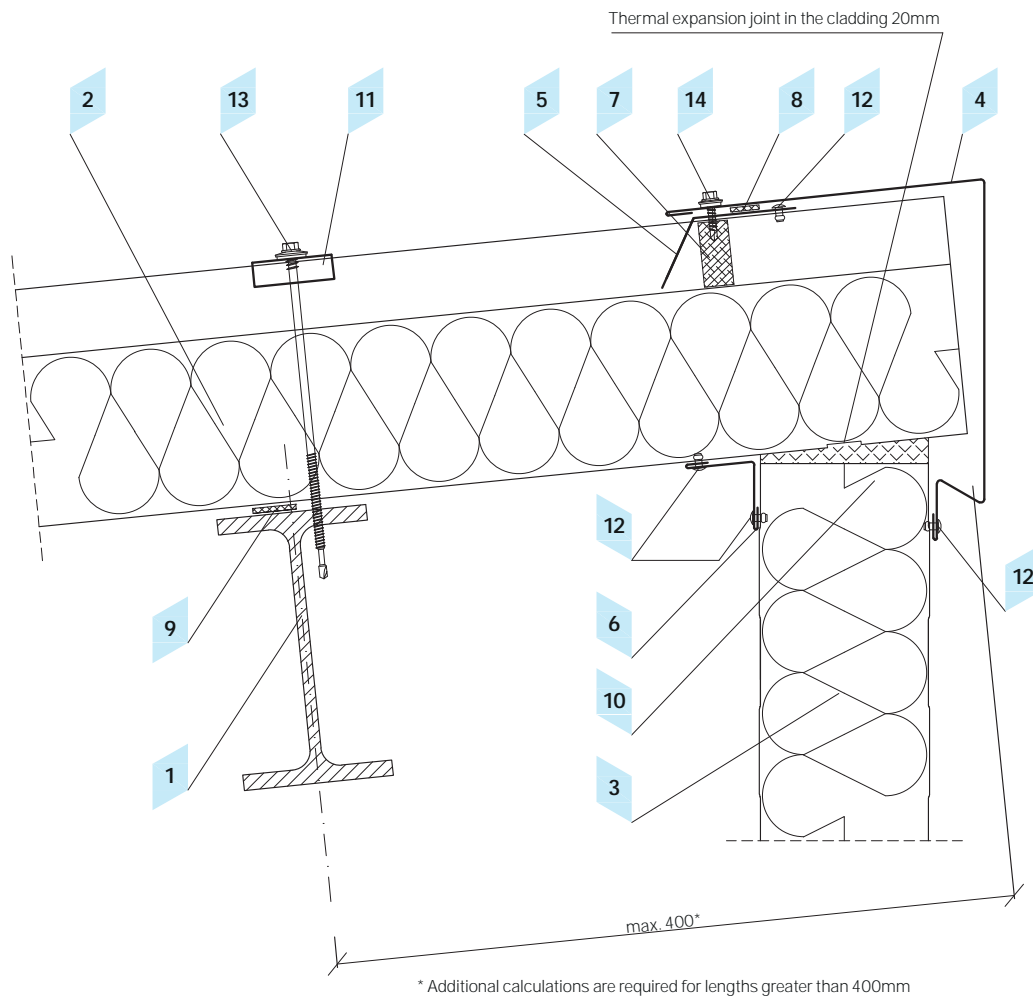
**3.12 Detail of fastening the roof panels to the gable wall - roof without the eaves**

Object	Product code
1 Roof panel ARPANEL D	ARPANEL D
2 Wall panel ARPANEL S	ARPANEL S
3 Individual flashing	
4 Corner internal flashing	OBD-6
5 Thermal insulation	
6 Steel tight rivet (every 300mm)	NT
7 Fastening screw	Z-03



### 3.13 Mono-pitch roofs, with the eaves

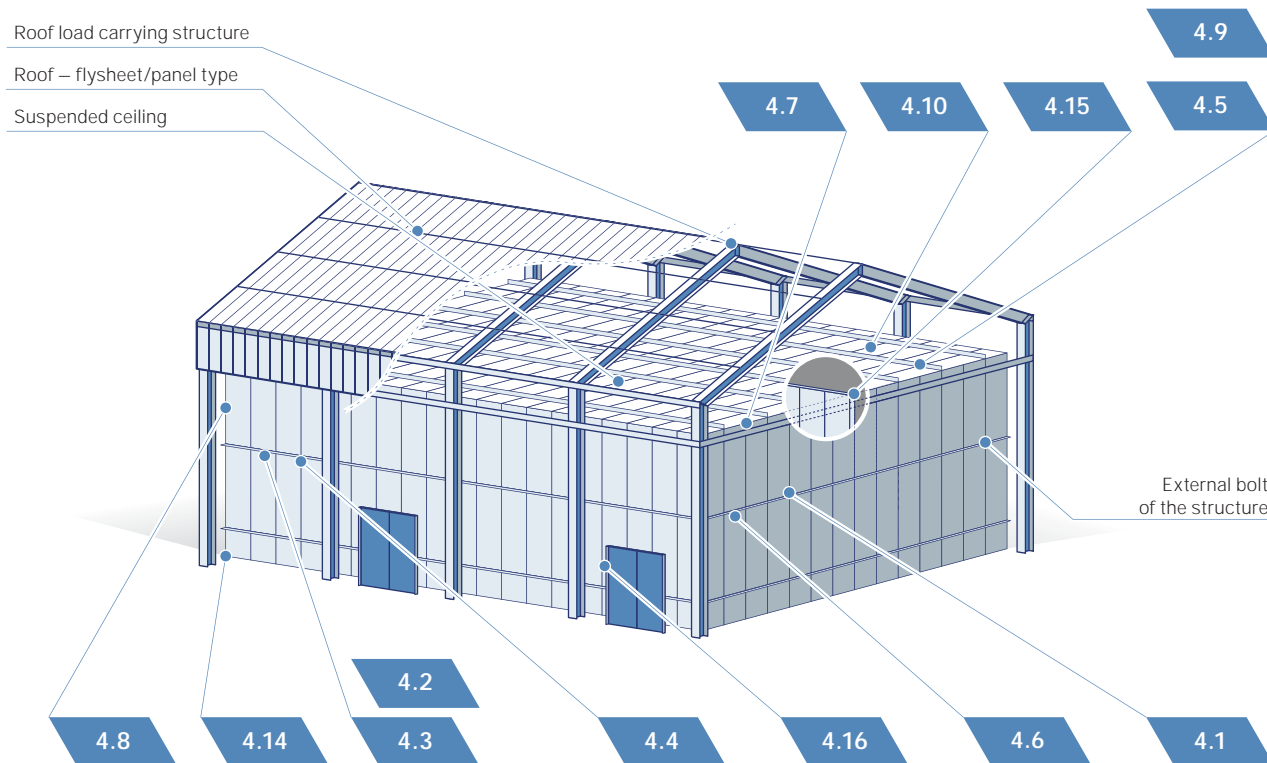
Object	Product code
1 Purlin	
2 Roof panel ARPANEL D	ARPANEL D
3 Wall panel ARPANEL S	ARPANEL S
4 Individual flashing	
5 Mask flashing, so called "comb"	OBD-3
6 Corner internal flashing	OBD-7
7 Profiled gasket	US-01
8 Acoustic and insulating gasket PES	US-02
9 Acoustic and insulating gasket PES	US-04
10 Thermal insulation	
11 Calotte	KLT
12 Steel tight rivet (every 300mm)	NT
13 Self-drilling screw	Z-01
14 Fastening screw	Z-03



#### 3.14 Mono-pitch roofs, without the eaves

Object	Product code
1 Purlin	
2 Roof panel ARPANEL D	ARPANEL D
3 Wall panel ARPANEL S	ARPANEL S
4 Individual flashing	
5 Mask flashing, so called "comb"	OBD-3
6 Corner internal flashing	OBD-6
7 Profiled gasket	US-01
8 Acoustic and insulating gasket PES	US-02
9 Acoustic and insulating gasket PES	US-04
10 Thermal insulation	
11 Calotte	KLT
12 Steel tight rivet (every 300mm)	NT
13 Self-drilling screw	Z-01
14 Fastening screw	Z-03

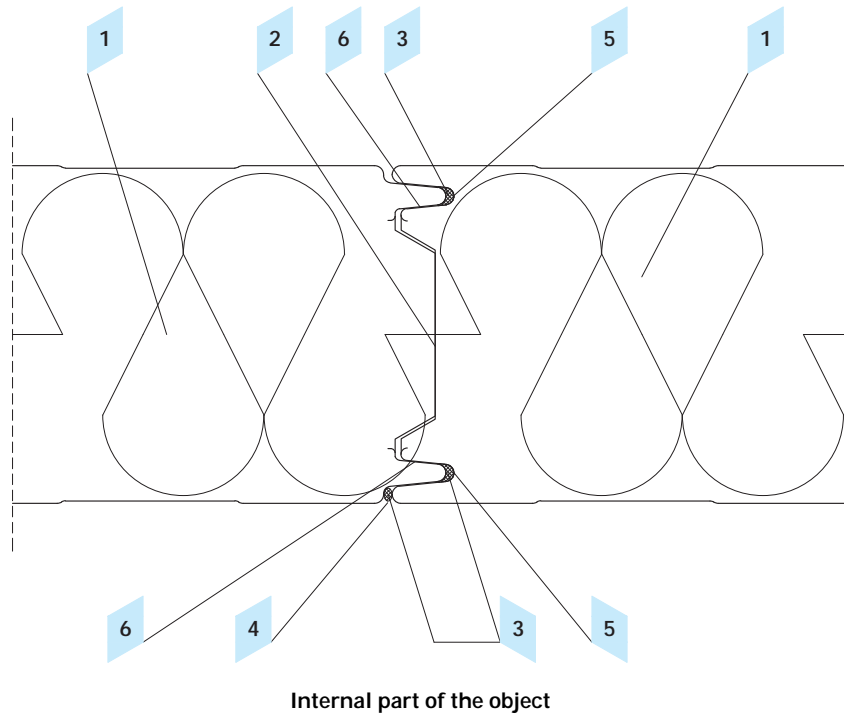
# Cladding system for cold store objects



## Diagram of placement of exemplary technical details

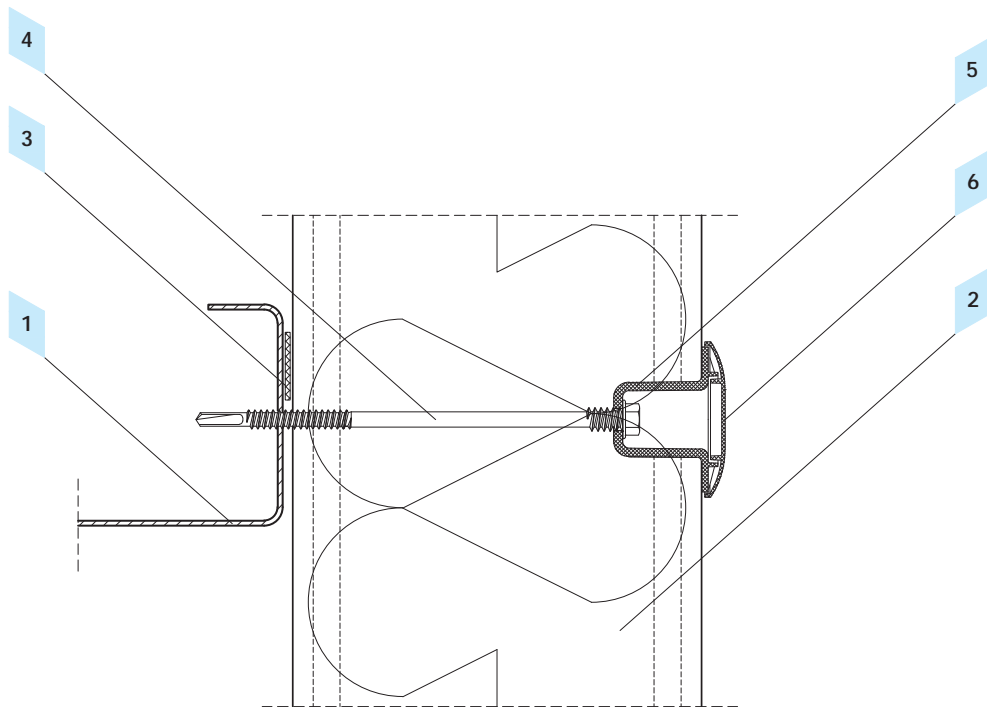
**Object**

- ..... 4.1 Longitudinal junction
- ..... 4.2 Detail fastening cold store panels with PCV screws
- ..... 4.3 Panels fastening detail with insulated nuts
- ..... 4.4 Panels fastening detail at the junction to the bolt
- ..... 4.5 Detail enabling suspension in the ceiling by insulating nuts
- ..... 4.6 Prolongation of cold store panels
- ..... 4.7 Detail of fastening wall panels and ceiling panels at the corner
- ..... 4.8 Detail of fastening cold store panels at the corner
- ..... 4.9 Suspension of panels at the ceiling by T-profile
- ..... 4.10 Suspension of panels at the ceiling by Omega profile
- ..... 4.11 Detail fastening the partition wall to the external wall
- ..... 4.12 Detail fastening the internal wall to the concrete plinth
- ..... 4.13 Detail fastening the internal wall and the PCV plinth
- ..... 4.14 Detail fastening the external wall to the floor and the concrete plinth
- ..... 4.15 Detail fastening the partition wall to the ceiling
- ..... 4.16 Detail fastening the external wall and the door frame



## 4.1 Longitudinal junction

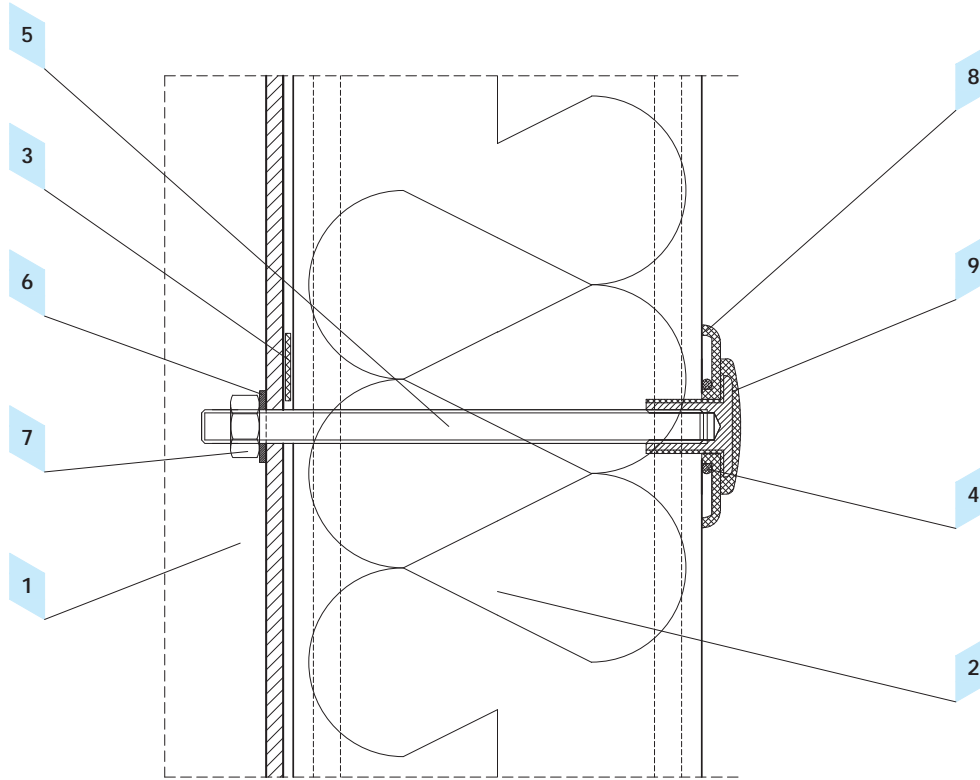
Object	Product code
1 Cold store panel ARPANEL CH	ARPANEL CH
2 Junction removing linear thermal bridge	
3 Sealing mass improving steam and air tightness	
4 Gap enabling application of sealing plastic masses	
5 Double-side shape of the panel junction as a double lock	
6 Conical inclination of panel joint to facilitate assembly	



**4.2 Detail fastening cold store panels with PCV screws**

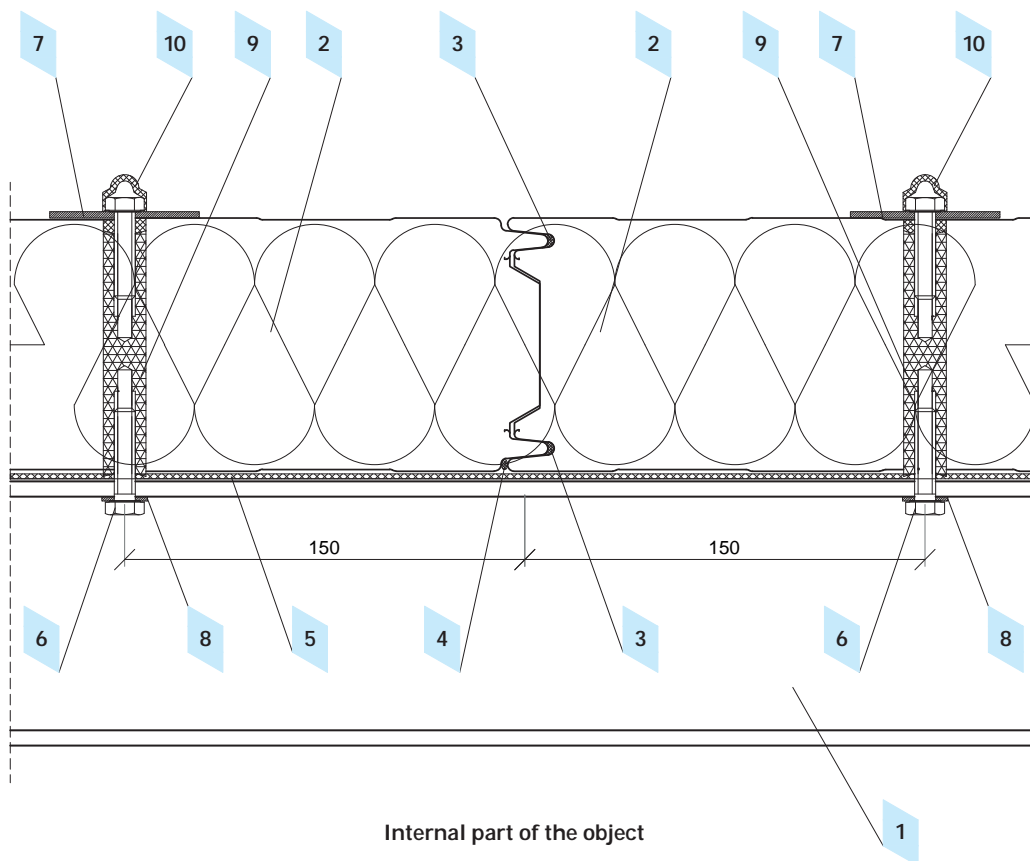
Object	Product code
1 Construction element	
2 Cold store panel ARPANEL CH	ARPANEL CH
3 Acoustic and insulating gasket PES	US-04
4 Self-drilling screw	
5 PCV bushing	
6 PCV plug	





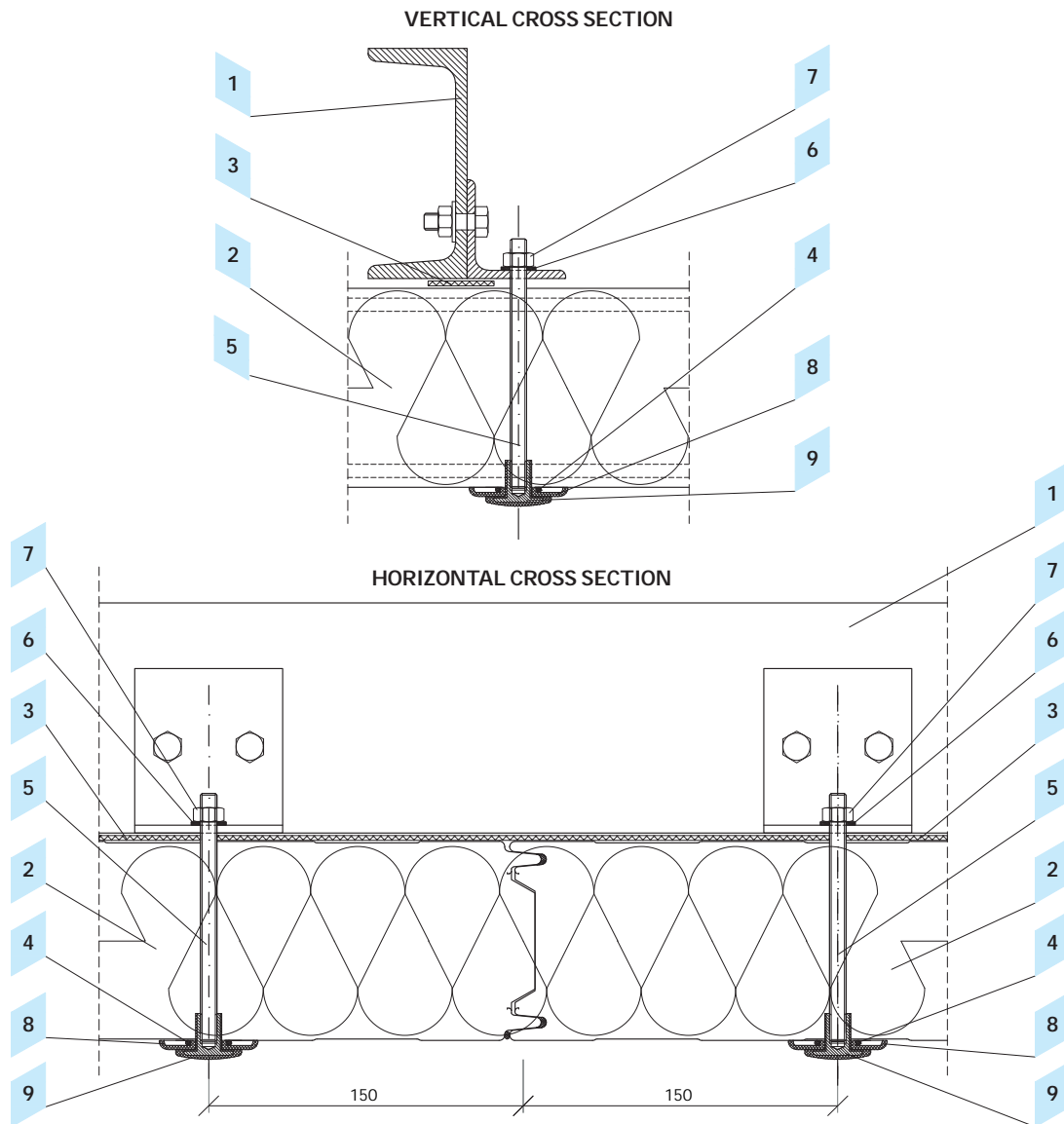
### 4.3 Panel fastening detail with insulation nuts

Object	Product code
1 Construction element	
2 Cold store panel ARPANEL CH	ARPANEL CH
3 Acoustic and insulating gasket PES	US-04
4 Plastic mass	
5 Threaded rod	
6 Washer	
7 Nut	
8 PVV washer	
9 PCV insulation nut	



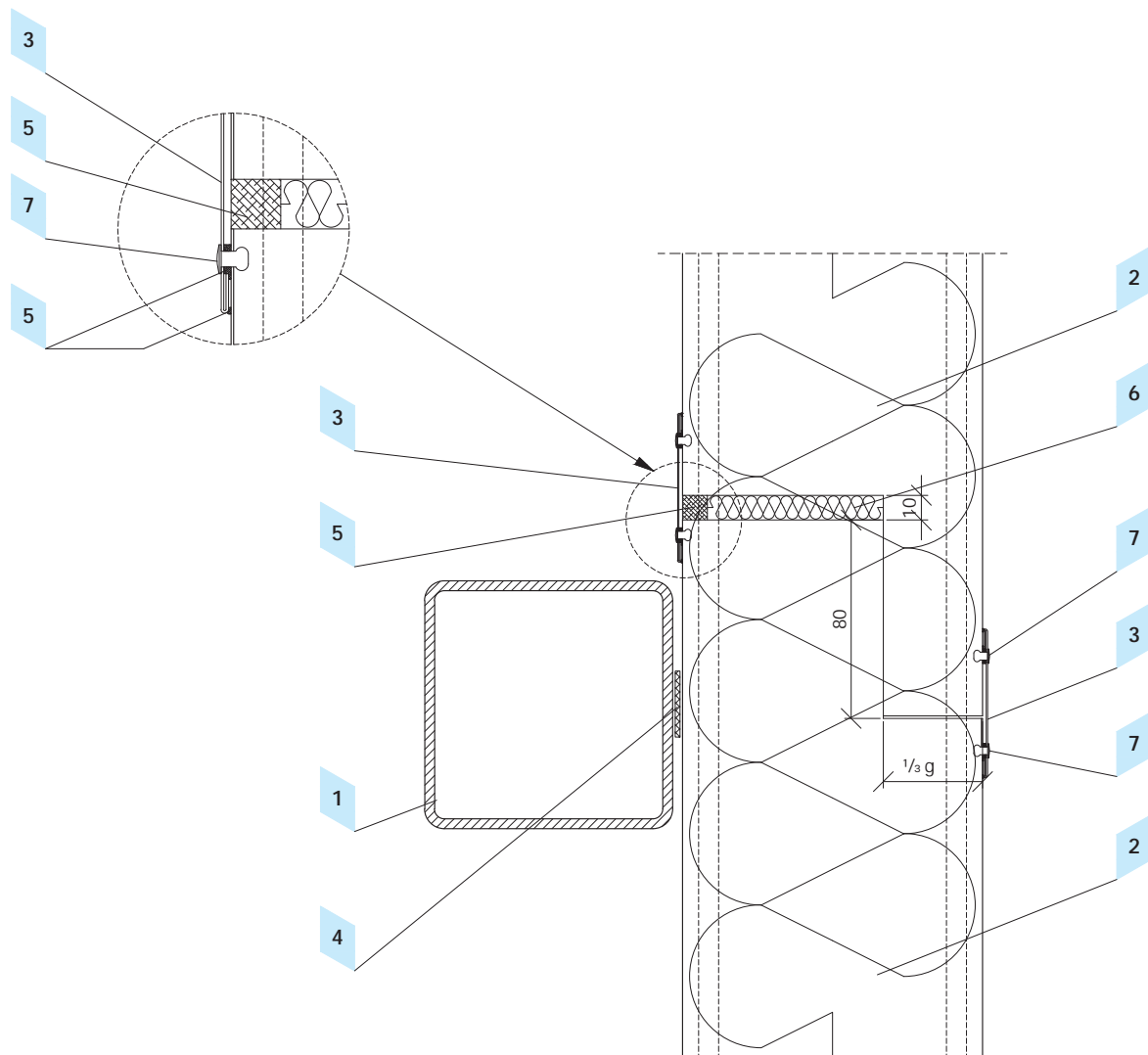
4.4 Panels fastening detail at the junction to the bolt

Object	Product code
1 Construction element	
2 Cold store panel ARPANEL CH	ARPANEL CH
3 Sealing mass preventing infiltration by the steam and the air	
4 Gap enabling application of sealing plastic masses	
5 Acoustic and insulating gasket PES	US-04
6 Fastening element	
7 Carrying washer	
8 Washer	
9 Polyamide bush	
10 Protecting hood	



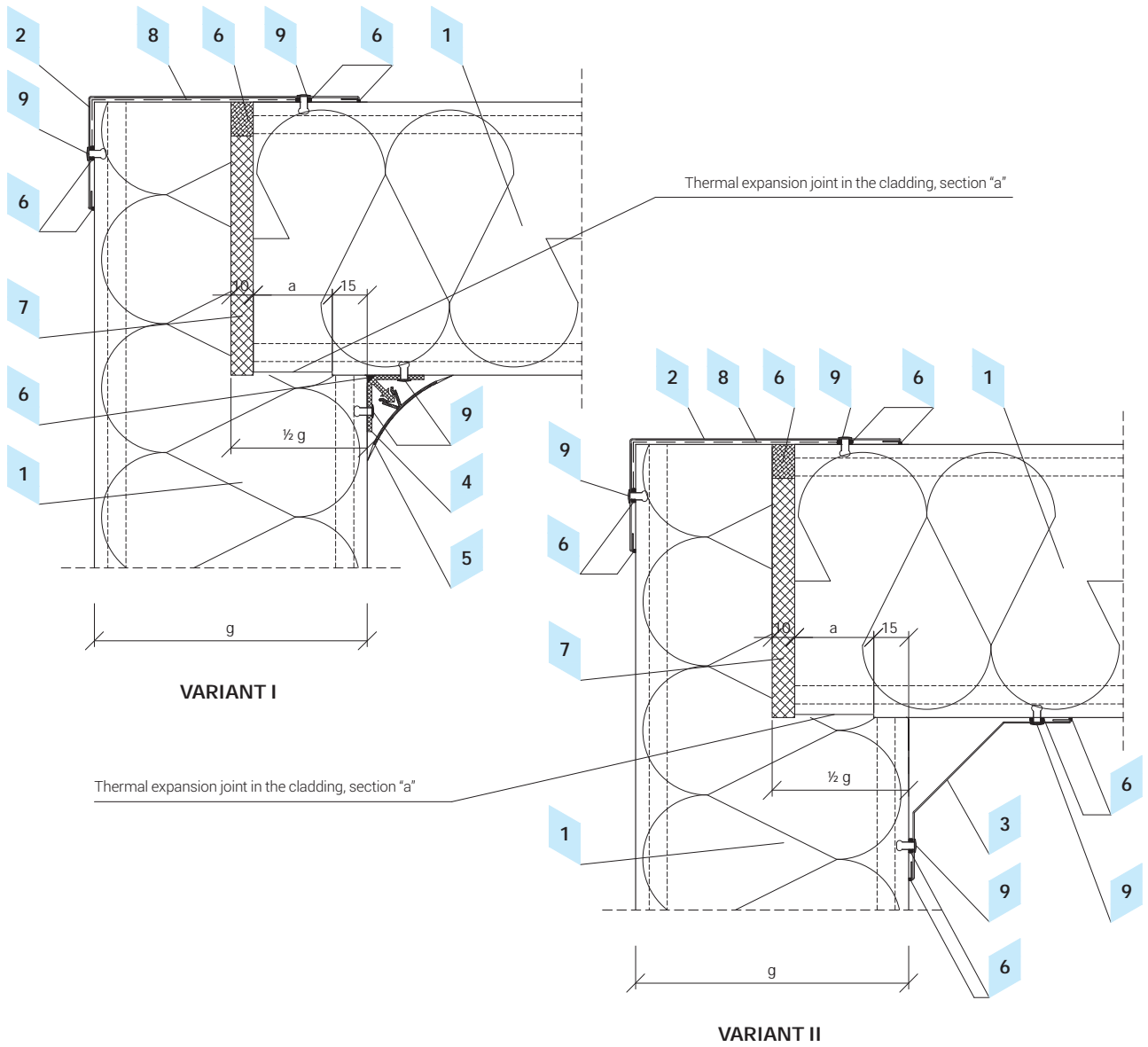
### 4.5 Detail enabling suspension in the ceiling by insulating nuts

Object	Product code
1 Construction element	
2 Cold store panel ARPANEL CH	ARPANEL CH
3 Acoustic and insulating gasket PES	US-04
4 Plastic mass	
5 Threaded rod	
6 Washer	
7 Nut	
8 PCV washer	
9 PCV insulation nut	



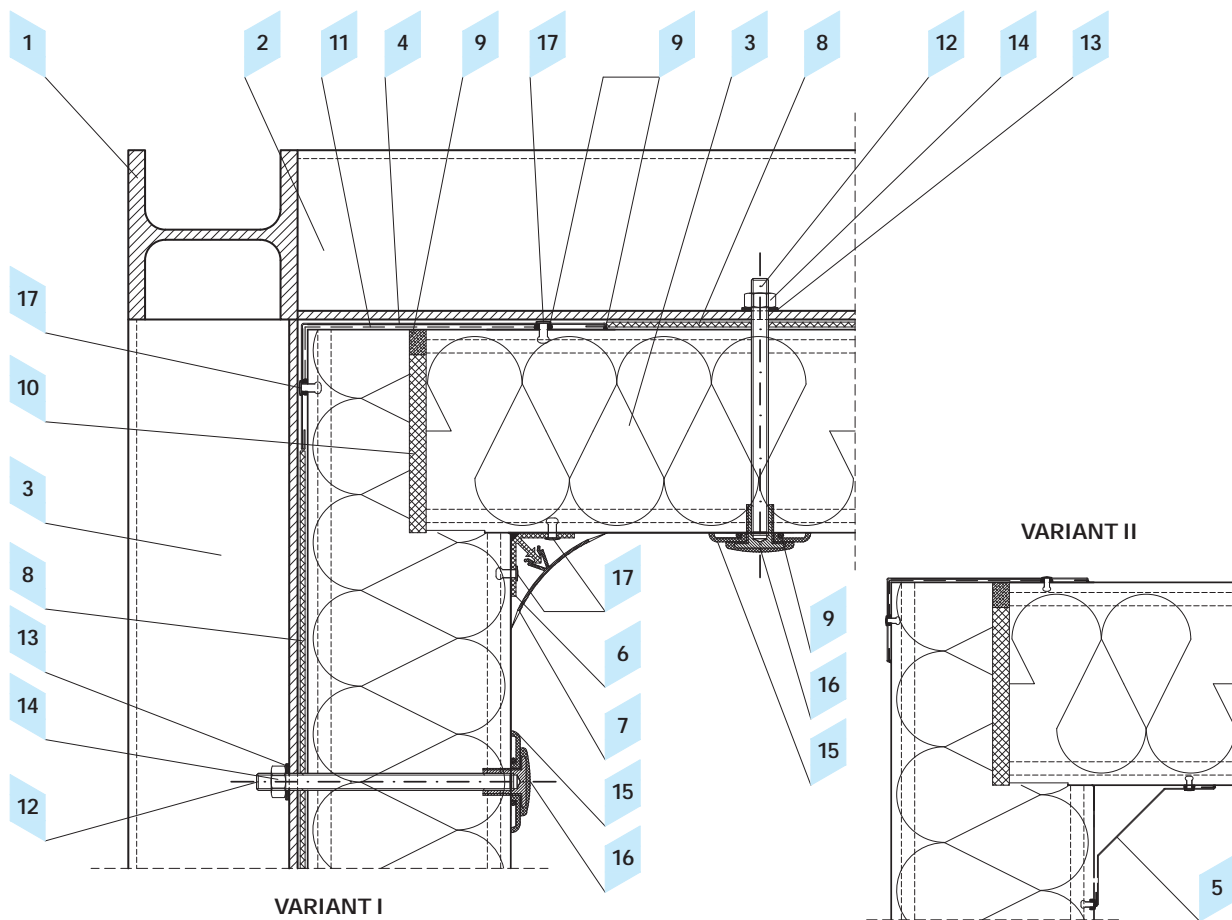
**4.6 Prolongation of cold store panels**

Object	Product code
1 Construction element	
2 Cold store panel ARPANEL CH	ARPANEL CH
3 Mask flat flashing	OBCH-4
4 Acoustic and insulating gasket PES	US-04
5 Plastic mass	
6 Polyethylene fitting foam	
7 Steel tight rivet (every 300mm)	NT



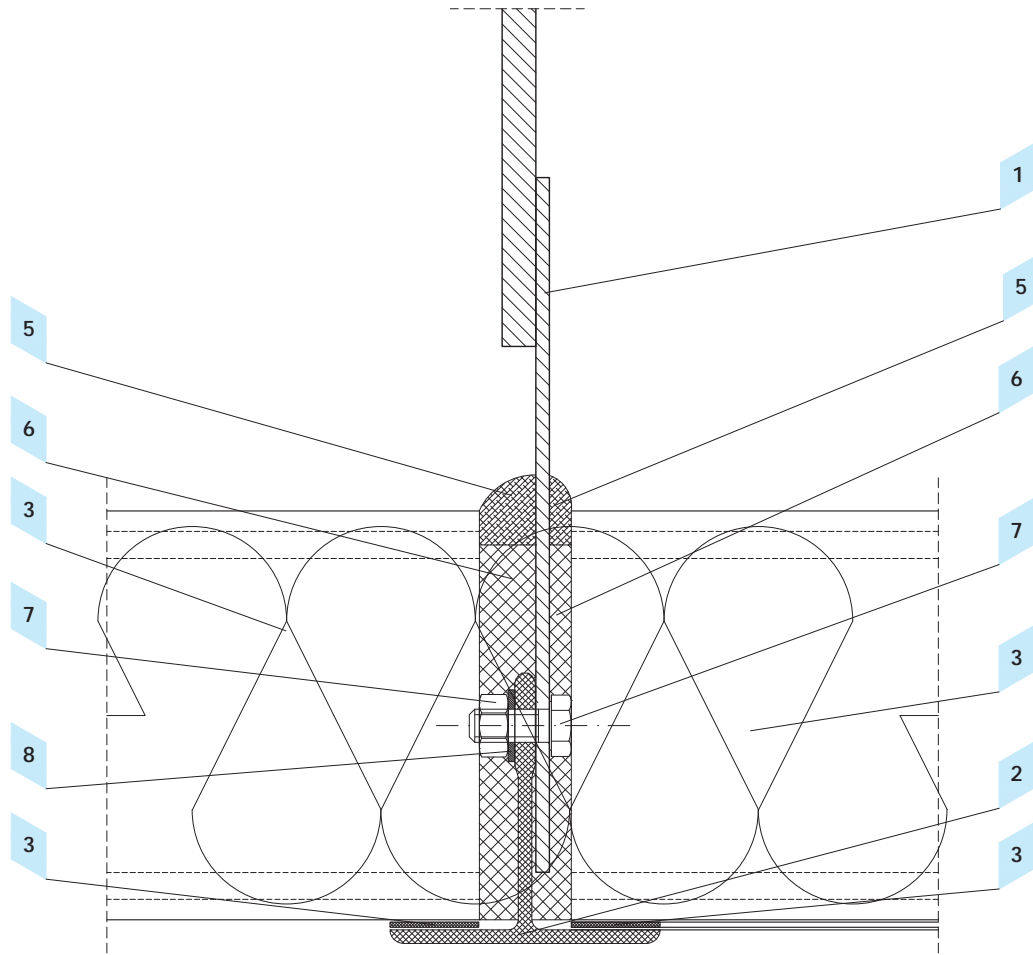
### 4.7 Detail of fastening wall panels and ceiling panels at the corner

Object	Product code
1 Cold store panel ARPANEL CH	ARPANEL CH
2 Corner external flashing	OBCH-1
3 Corner internal flashing	OBCH-3
4 Fastening profile PCV	
5 Corner profile PCV	
6 Plastic mass	
7 Polyurethane fitting foam	
8 Polyethylene foil	
9 Steel tight rivet (every 300mm)	NT



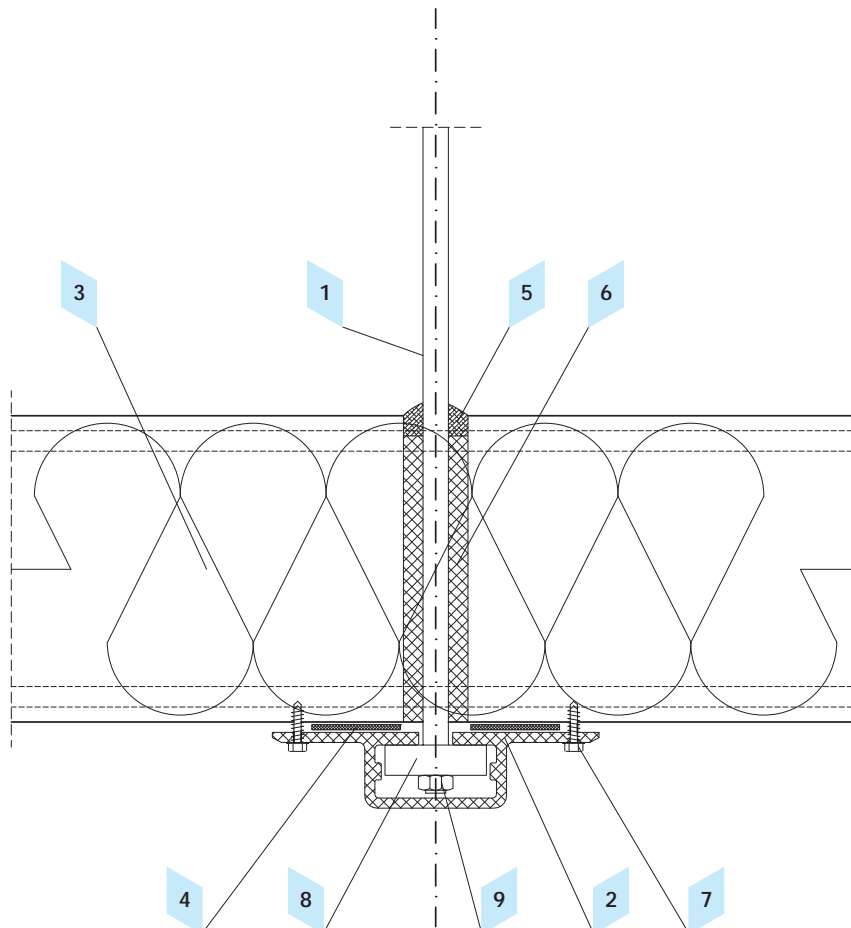
4.8 Detail of fastening cold store panels at the corner

Object	Product code
1 Construction element	
2 Construction element	
3 Cold store panel ARPANEL CH	ARPANEL CH
4 Corner external flashing	OBCH-1
5 Corner internal flashing	OBCH-3
6 Fastening profile PCV	
7 Corner profile PCV	
8 Acoustic and insulating gasket PES	US-04
9 Plastic mass	
10 Polyurethane fitting foam	
11 Polyethylene foil	
12 Threaded rod	
13 Washer	
14 Nut	
15 PCV washer	
16 PCV insulation nut	
17 Steel tight rivet (every 300mm)	NT



### 4.9 Suspension of panels at the ceiling by T-profile

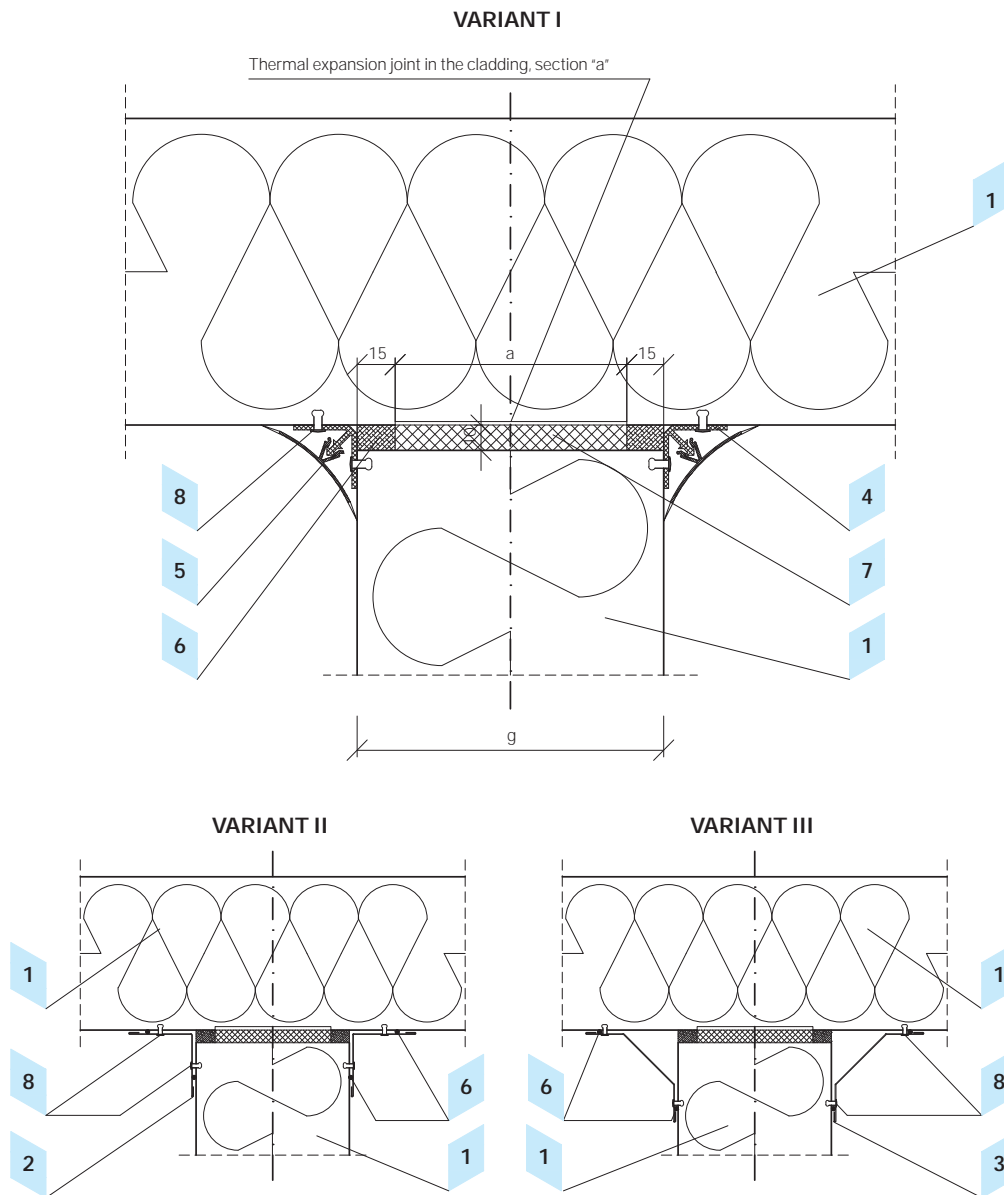
Object	Product code
1 Hanger - tie	
2 T-profile (aluminum TALU 01 or polyester PUL 01 or PUL 02)	
3 Cold store panel ARPANEL CH	ARPANEL CH
4 Acoustic and insulating gasket PES	US-02
5 Plastic mass	
6 Polyurethane fitting foam	
7 Nut	
8 Washer	



**4.10 Suspension of panels at the ceiling by Omega profile**

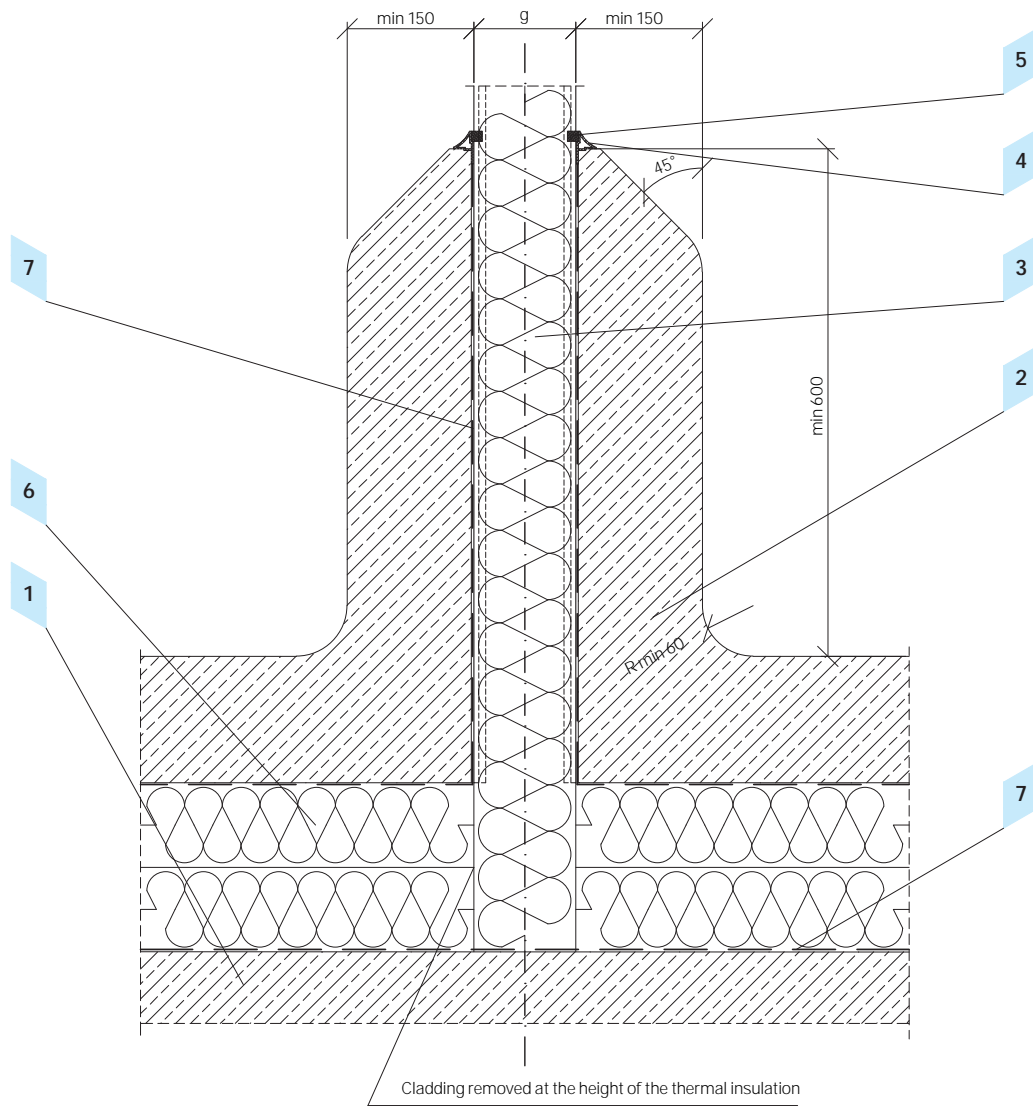
Object	Product code
1 Hanger - tie	
2 Omega profile	
3 Cold store panel ARPANEL CH	ARPANEL CH
4 Acoustic and insulating gasket PES	US-02
5 Plastic mass	
6 Polyurethane fitting foam	
7 Fastening screw	Z-03
8 Washer	
9 Nut	





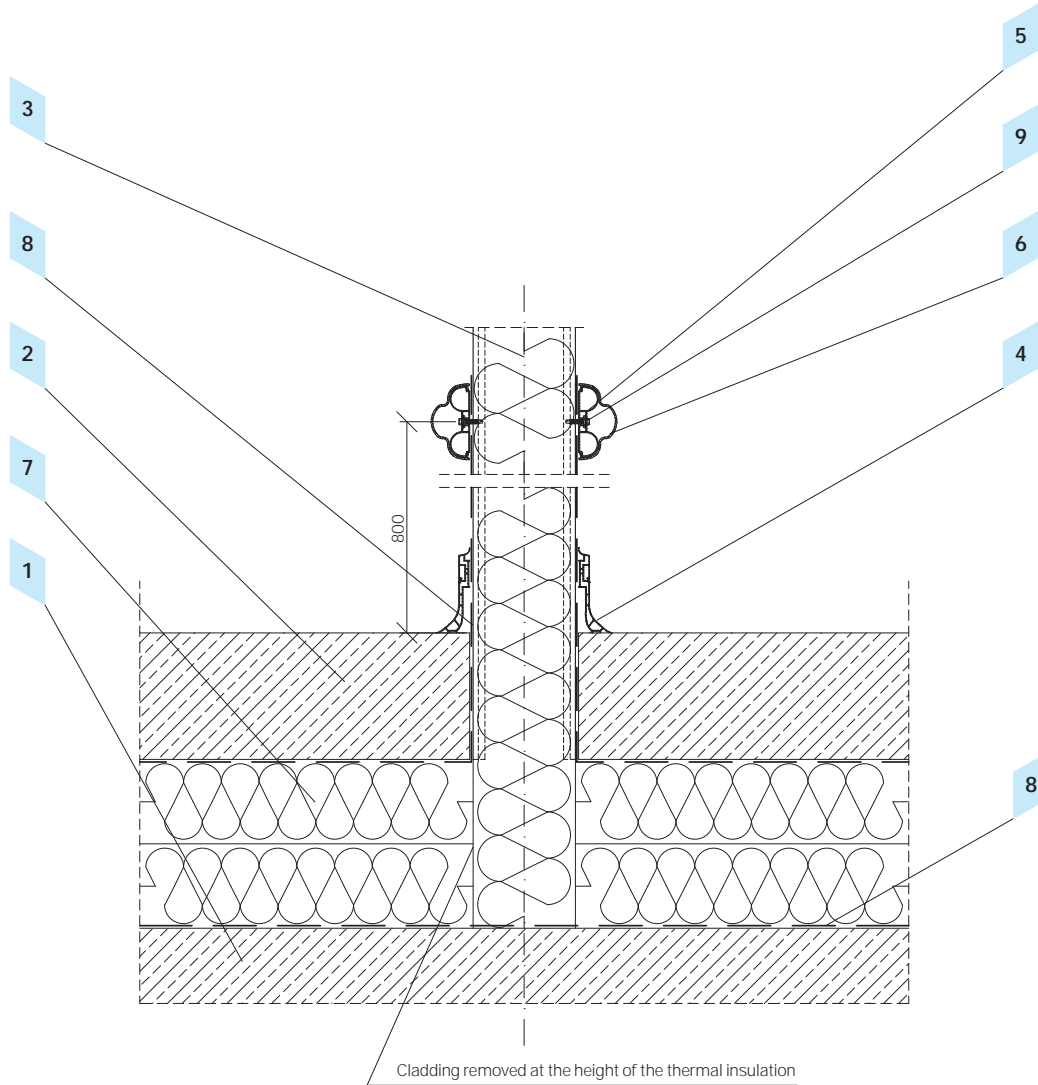
### 4.11 Detail fastening the partition wall to the external wall

Object	Product code
1 Cold store panel ARPANEL CH	ARPANEL CH
2 Corner internal flashing	OBCH-2
3 Corner internal flashing	OBCH-3
4 Fastening profile PCV	
5 Corner profile PCV	
6 Plastic mass	
7 Polyurethane fitting foam	
8 Steel tight rivet (every 300mm)	NT



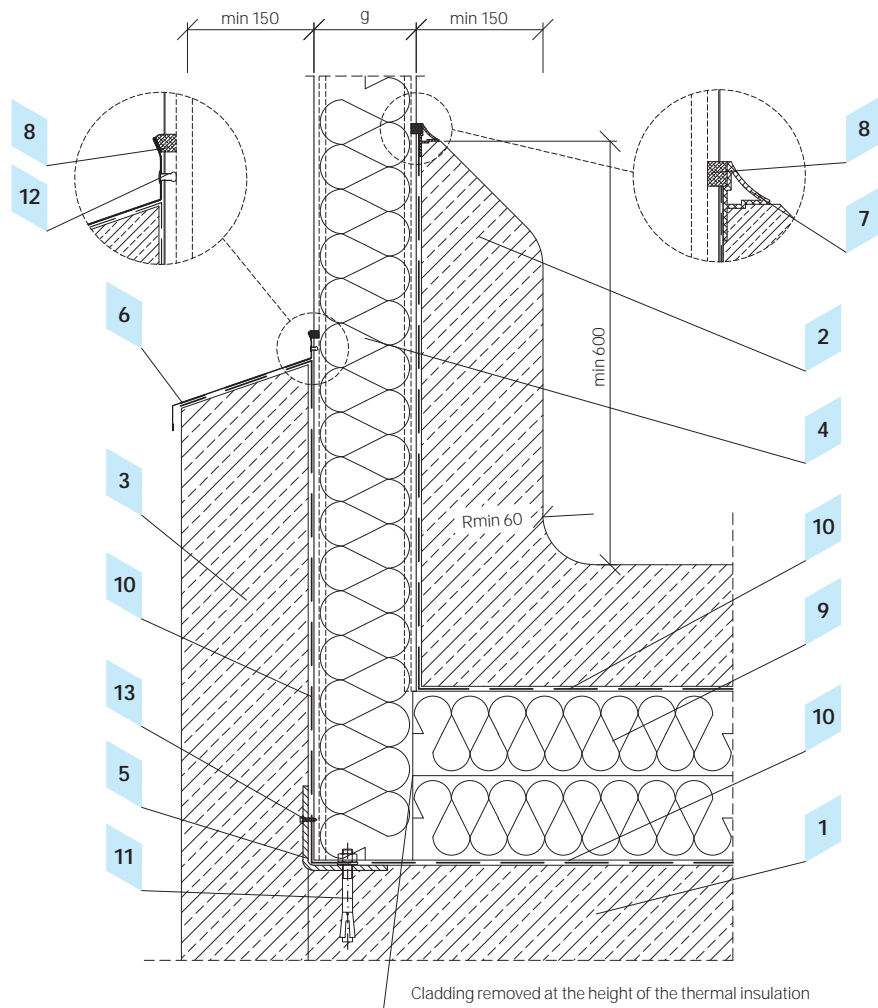
4.12 Detail fastening the internal wall to the concrete plinth

Object	Product code
1 Concrete slab	
2 Concrete floor	
3 Cold store panel ARPANEL CH	ARPANEL CH
4 Corner profile PCV	
5 Plastic mass	
6 Thermal insulation	
7 Vertical and horizontal humid insulation	



### 4.13 Detail fastening the internal wall and the PCV plinth

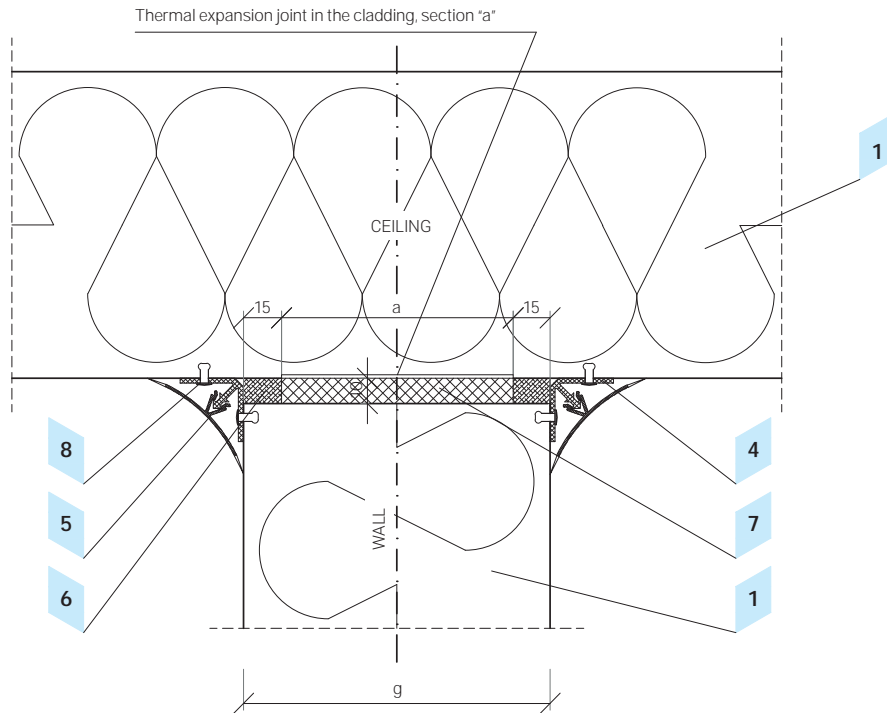
Object	Product code
1 Concrete slab	
2 Concrete floor	
3 Cold store panel ARPANEL CH	ARPANEL CH
4 PCV plinth	
5 Wall support for the bump rail	
6 Bump rail shield	
7 Thermal insulation	
8 Vertical and horizontal humid insulation	
9 Installation screw	



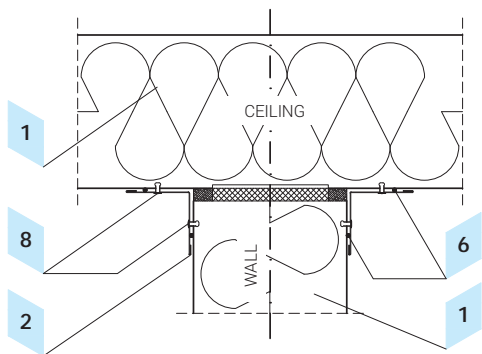
4.14 Detail fastening the external wall to the floor and the concrete plinth

Object	Product code
1 Concrete slab	
2 Concrete floor	
3 Concrete plinth	
4 Cold store panel ARPANEL CH	ARPANEL CH
5 Angle bar	
6 Eaves flashing	OBCH-5
7 Corner profile PCV	
8 Plastic mass	
9 Thermal insulation	
10 Vertical and horizontal humid insulation	
11 Anchor	
12 Steel tight rivet (every 300mm)	NT
13 Fastening screw	Z-03

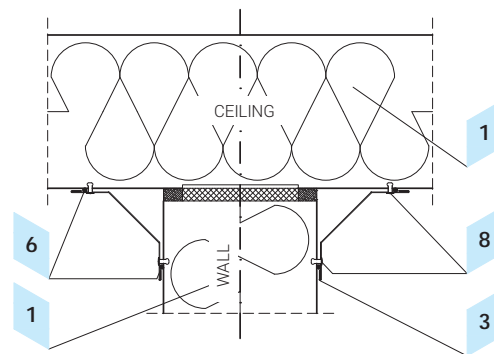
## VARIANT I



## VARIANT II

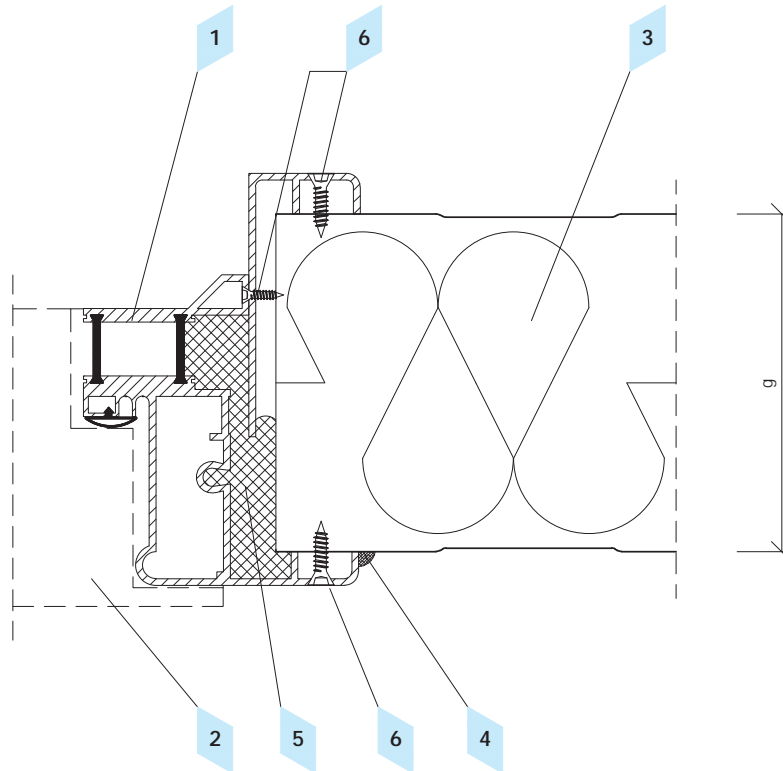


## VARIANT III



### 4.15 Detail fastening the partition wall to the ceiling

Object	Product code
1 Cold store panel ARPANEL CH	ARPANEL CH
2 Corner internal flashing	OBCH-2
3 Corner internal flashing	OBCH-3
4 Fastening profile PCV	
5 Corner profile PCV	
6 Plastic mass	
7 Polyurethane fitting foam	
8 Steel tight rivet (every 300mm)	NT



**4.16 Detail fastening the external wall and the door frame**

Object	Product code
1 Cold store door frame	
2 Cold store door	
3 Cold store panel ARPANEL CH	ARPANEL CH
4 Plastic mass	
5 Polyurethane fitting foam	
6 Fastening screw	Z-03



---

# ARPANEL

---

## **ARPANEL - Sandwich panels**

Adamietz Sp. z o.o.

Braci Prankel 1

47-100 Strzelce Opolskie

Poland

NIP [Tax Id. No.]: 756 18 36 633

tel. +48 77 463 00 55

fax +48 77 463 92 00

biuro@arpanel.eu

Adamietz Sp z o.o, the producer of ARPANEL sandwich panels, is not responsible for any differences between the content of technical catalogue and the real products parameters.

The producer reserves the right to implement changes and modifications to the content without prior notice.

Pursuant to the Civil Code, the content of the product card does not constitute a commercial offer.